

TECHNICAL MANUAL

**ORGANIZATIONAL, DIRECT SUPPORT, AND GENERAL SUPPORT
MAINTENANCE REPAIR PARTS AND SPECIAL TOOLS LIST
FOR
RECORDERS, WIND DIRECTION AND SPEED
RO-2/GMQ (NSN 6660-00-663-8075)
RO-2A/GMQ (NSN 6660-00-932-8311)
RO-2B/GMQ AND RO-2C/GMQ**

HEADQUARTERS, DEPARTMENT OF THE ARMY

18 SEPTEMBER 1978

**ORGANIZATIONAL, DIRECT SUPPORT, AND GENERAL SUPPORT MAINTENANCE
 REPAIR PARTS AND SPECIAL TOOLS LIST
 FOR
 RECORDERS, WIND DIRECTION AND SPEED
 RO-2/GMQ (NSN 6660-00-663-8075)
 RO-2A/GMQ (NSN 6660-00-932-8311)
 RO-2B/GMQ AND RO-2C/GMQ**

Current as of 18 April 1978

REPORTING OF ERRORS

You can improve this manual by recommending improvements using DA Form 2028-2 located in the back of the manual. Simply tear out the self-addressed form, fill it out as shown on the sample, fold it where shown, and drop it in the mail.

If there are no blank DA Form 2028-2 in the back of your manual, use the standard DA Form 2028 (Recommended Changes to Publications and Blank Forms) and forward to the Commander, US Army Communications and Electronics Materiel Readiness Command, ATTN: DRSEL-MA-Q, Fort Monmouth, NJ 07703.

In either case a reply will be furnished direct to you.

Table of Contents

	Page	Illus Figure
SECTION I. Introduction	1	
II. Repair parts list.....	5	
GROUP 00 Recorders, Wind Direction and Speed RO-2/GMQ, RO-2A/GMQ, RO-2B/GMQ, RO-2C/GMQ	5	1-15
01 Cable assembly, power electrical (W401)	41	16
SECTION III Special tools list (Not applicable)		
IV.National stock number and part number index	42	

*This manual supersedes TM 11-6660-231-24P, 8 November 1974.

**SECTION I
INTRODUCTION**

1. Scope

This manual lists spares and repair parts; special tools; special test, measurement, and diagnostic equipment (TMDE), and other special support equipment required for performance of organizational, direct support, and general support maintenance of the RO-2/GMQ, positions of the Uniform SMR Code format as follows: RO-2A/GMQ, RO-2B/GMQ and RO-2C/GMQ. It authorizes the requisitioning and issue of spares and repair parts as indicated by the source and maintenance codes.

2. General

This Repair Parts and Special Tools List is divided into the following sections:

a. *Section II. Repair Parts List.* A list of spares and repair parts authorized for use in the performance of Maintenance. The list also includes parts which must be removed for replacement of the authorized parts. Parts lists are composed of functional groups in numeric sequence, with the parts in each group listed in figure and item number sequence.

b. *Section III. Special Tools List.* Not applicable.

c. *Section IV National Stock Number and Part Number Index.* A list, in National item identification number (NIIN) sequence, of all National stock numbers (NSN) appearing in the listings, followed by a list, in alphameric sequence, of all part numbers appearing in the listings. National stock numbers and part numbers are cross-referenced to each illustration figure and item number appearance.

3. Explanation of Columns

a. *Illustration.* This column is divided as follows:

(1) *Figure number.* Indicates the figure number of the illustration on which the item is shown.

(2) *Item number.* The number used to identify Item called out in the illustration.

b. *Source, Maintenance, and Recoverability (SMR) Codes.*

(1) *Source code.* Source codes indicate the manner of acquiring support items for maintenance, repair, or overhaul of end items. Source codes are entered in the first and second positions of the Uniform SMR Code format as follows:

<i>Code</i>	<i>Definition</i>
PA	Item procured and stocked for anticipated or known usage
XD	A support item that is not stocked. When required, item will be procured through normal Supply channels.

NOTE

Cannibalization or salvage may be used as a source of supply for any items source coded above except those coded XA and aircraft

support items as restricted by AR 700-42.

(2) *Maintenance code.* Maintenance codes are assigned to indicate the levels of maintenance authorized to USE and REPAIR support items. The maintenance codes are entered in the third and fourth

(a) The maintenance code entered in the third position will indicate the lowest maintenance level authorized to remove, replace, and use the support item. The maintenance code entered in the third position will indicate one of the following levels of maintenance:

<i>Code</i>	<i>Application/Explanation</i>
C	-- Crew or operator maintenance performed within organizational maintenance.
O	- Support item is removed, replaced, used at the Organizational level. or operator maintenance
F	- Support item is removed, replaced, used at the direct support level.
H	- Support item is removed, replaced, used at the general support level.

(b) The maintenance code entered in the fourth position indicates whether the item is to be repaired and identifies the lowest maintenance level with the capability to perform complete repair (i.e., all authorized maintenance functions). This position will contain one of the following maintenance codes:

<i>Code</i>	<i>Application/Explanation</i>
O	- The lowest maintenance level capable of complete repair of the support item is the organizational level.
H	- The lowest maintenance level capable of complete repair of the support item is the general support level.
Z	- Nonreparable. No repair is authorized.

(3) *Recoverability code.* Recoverability codes are Assigned to support items to indicate the disposition action on unserviceable items. The recoverability code is entered in the fifth position of the Uniform SMR C(xde format as follows:

<i>Recoverability codes</i>	<i>Definition</i>
Z	- Nonreparable item. When unserviceable, condemn and dispose at the level indicated in position 3.
O	- Reparable item. When uneconomically reparable, condemn and dispose at organizational level.
H	- Reparable item. When uneconomically reparable, condemn and dispose at the general support level.

c. *National Stock Number.* Indicates the National stock number assigned to the item and will be used for requisitioning purposes.

d. *Part Number*. Indicates the primary number used by the manufacturer (individual, company, firm, corporation, or Government activity), which controls the design and characteristics of the item by means of its engineering drawings, specifications, standards, and inspection requirements to identify an item or range of items.

NOTE

When a stock numbered item is requisitioned, the repair part received may have a different part number than the part being replaced.

e. *Federal Supply Code for Manufacturer (FSCM)*.

The FSCM is a 5-digit numeric code listed in SB 708-42 which is used to identify the manufacturer, distributor, or Government agency, etc.

f. *Description*. Indicates the Federal item name and, if required, a minimum description to identify the item.

g. *Unit of Measure (U/M)*. Indicates the standard of the basic quantity of the listed item as used in performing the actual maintenance function. This measure is expressed by a two-character alphabetical abbreviation (e.g., ea, in, pr, etc). When the unit of measure differs from the unit of issue, the lowest unit of issue that will satisfy the required units of measure will be requisitioned

h. *Quantity Incorporated in Unit*. Indicates the quantity of the item used in the breakout shown on the illustration figure, which is prepared for a functional group, subfunctional group, or an assembly.

4. Special Information

a. Usable on codes are shown in the description column. Uncoded items are applicable to all models. Identification of the usable on codes used in this publication are:

<i>Code</i>	<i>Used on</i>
5JQ	RO-2/RMQ
5JR	RO-2A/GMQ
5JS	RO-2B/GMQ
5JT	RO-2C/GMQ

b. The following publications pertain to the RO-2/GMQ, RO-2A/GMQ, RO-2B/GMQ, RO-2C/GMQ and its components:

TM 11-6660-231-12, Recorders, Wind Direction and Speed RO-2/GMQ, RO-2A/GMQ, RO-2B/GMQ and RO-2C/GMQ.

TM 11-6660-231-34, Recorders, Wind Direction and Speed RO-2/GMQ, RO-2A/GMQ, RO-2B/GMQ, and RO-2C/GMQ.

5. How to Locate Repair Parts

a. When National stock number or part number is Unknown.

(1) *First*. Using the table of contents, determine the functional group within which the item belongs. This is necessary since illustrations are prepared for functional groups and listings are divided into the same groups.

(2) *Second*. Find the illustration covering the functional group to which the item belongs.

(3) *Third*. Identify the item on the illustration and note the illustration figure and item number on the item

(4) *Fourth*. Using the Repair Parts Listing, find the figure and item number noted on the illustration. b.

When National stock number or part number is known.

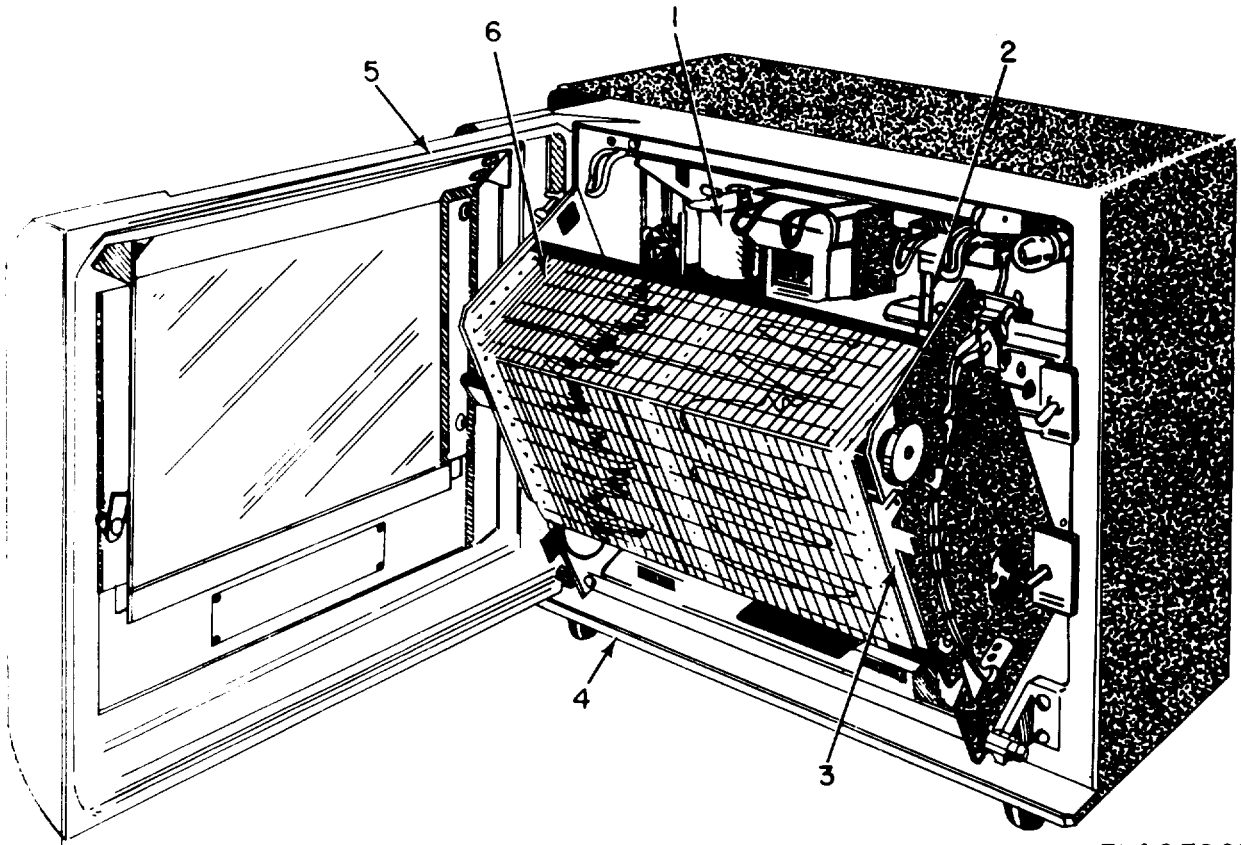
(1) *First*. Using the Index of National Stock Numbers and Part Numbers, find the pertinent National stock number or part number. This index is in NIIN sequence followed by a list of part numbers in alphameric sequence, cross-referenced to the illustration figure number and item number.

(2) *Second*. After finding the figure and item number, locate the figure and item number in the repair parts list

6. Abbreviations

Not applicable.

(Next printed page is 4.)



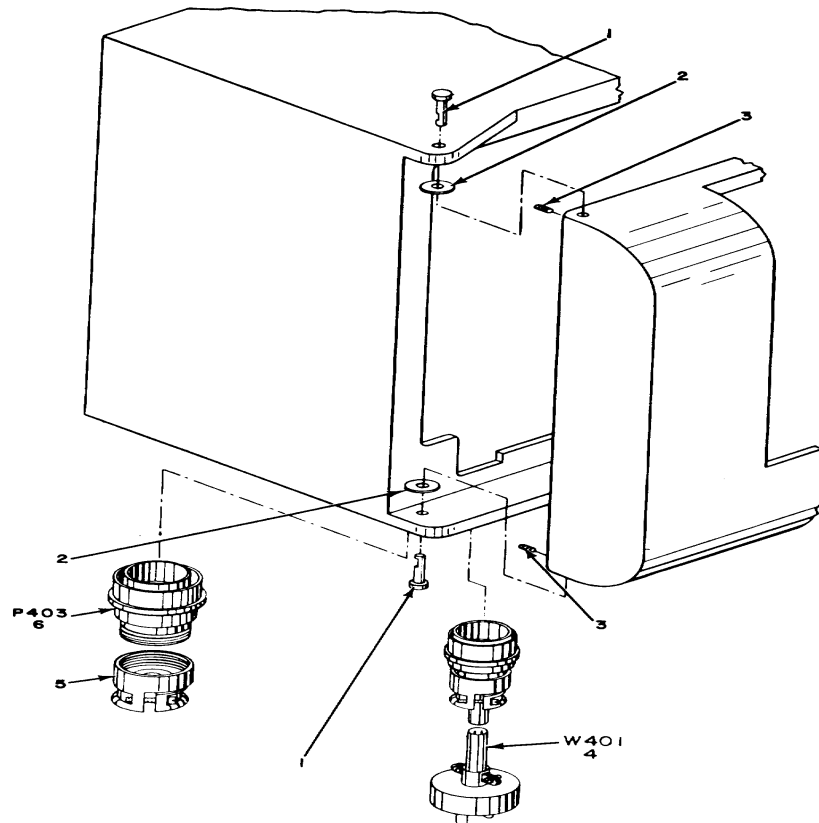
EL40E001

Figure 1. Recorders, Wind Direction and Speed RO-2/GMQ, RO-2A/GMQ, RO-2B/GMQ, RO-2C/GMQ.

SECTION II

TM11-6660-231-24P

(1) ILLUSTRATION		(2)	(3)	(4)	(5)	(6) DESCRIPTION	(7)	(8)
(a) FIG NO.	(b) ITEM NO.	SMR CODE	NATIONAL STOCK NUMBER	PART NUMBER	FSCM	USABLE ON CODE	U/M	QTY INC IN UNIT
						GROUP 00 RECORDERS, WIND DIRECTION AND SPEED RO-2/GMQ, RO-2A/GMQ, KO-26/GMQ, RO-20/GMQ		
1	1	XDHHH		SMD294055	80063	WIND DIR MECH ASSY 5JQ, 5JR, 5JS...	EA	1
1	1	PAHHH	6660-00-565-0229	SMD191864	80063	WIND DIR MECH ASSY 5JT	EA	1
1	2	PAHHH	6660-00-563-5212	SMD294056	80063	SPEED MECHANIS.....	EA	1
1	3	PAHHH	6660-00-399-7997	517512-1-G	23667	RECORDS SUBASSY..... 5JQ, 5JR, 5JS	EA	1
1	3	XDHHH		SMD191865	80063	CHART DR MECH ASSY 5JT	EA	1
1	4	XDFHH		SMD294053	80063	CASE ASSMEBLY.....	EA	1
1	5	XDHHH		SMD361830	80063	DOOR ASSEMBLY ON C MODEL USED ON ORDER NO. 18004-PP-62 AND 18006-PP-62	EA	1
1	5	XDHHH		SMD294052	80063	DOOR ASSY, SWINGING USED ON CONTRACT NO. DAAB05-69-0-0402	EA	1
1	6	PACZZ	6660-00-566-7988	SMD294064	80063 5JT		
1	6	PACZZ	6660-00-566-7987	SMD294065	80063	CHART, RODG KH.....	EA	1
						CHART RODG, MPH OR 5JS, 5JT	EA	1
					5			



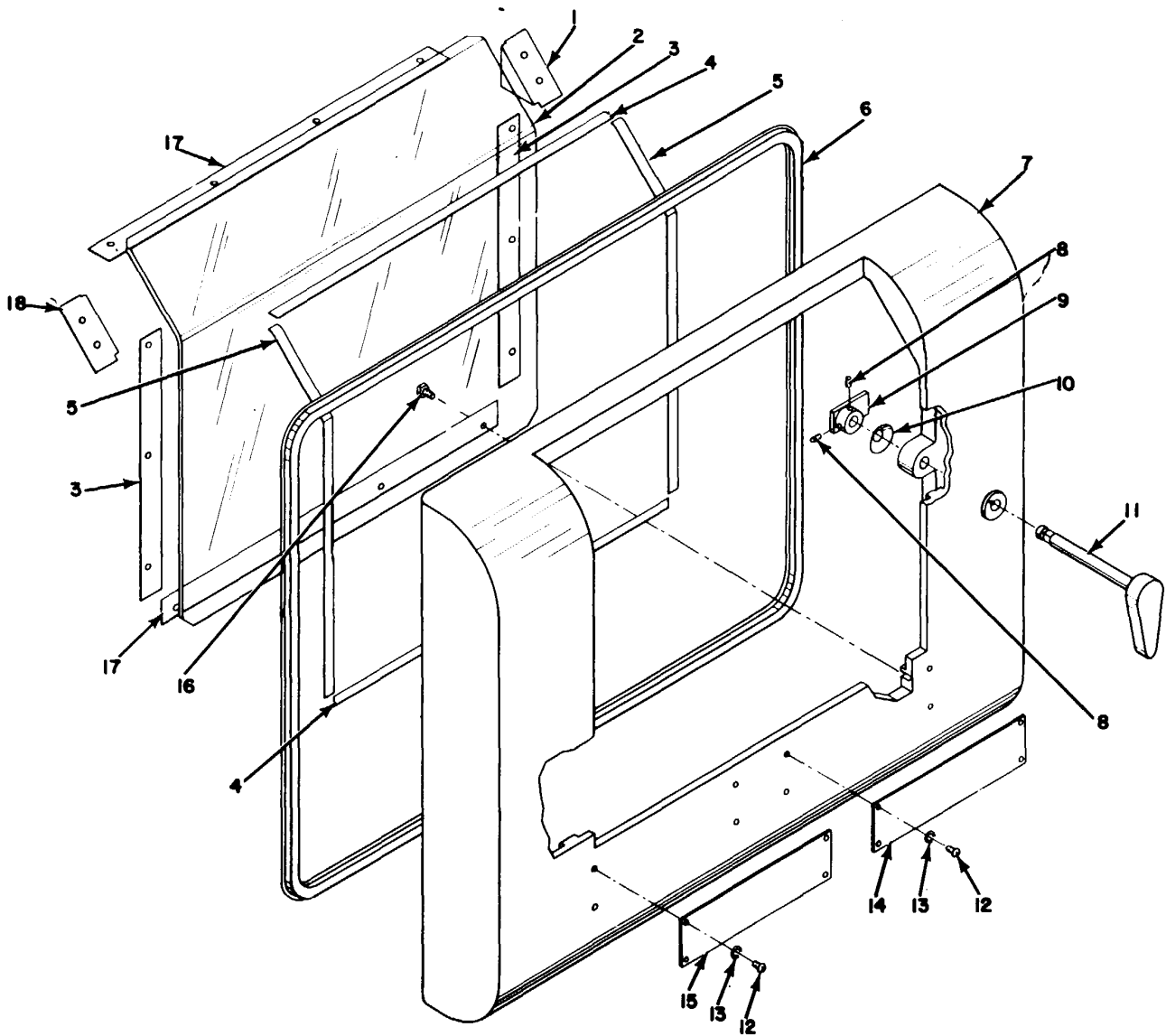
EL40E002

Figure 2. Recorders, Wind Direction and Speed RO-2/GMQ, RO-2A/GMQ, RO-2B/GMQ, RO-2C/GMQ, Case and Cable

SECTION II

TM11-6660-231-24P

(1) ILLUSTRATION		(2)	(3)	(4)	(5)	(6) DESCRIPTION	(7)	(8)
(a) FIG NO.	(b) ITEM NO.	SMR CODE	NATIONAL STOCK NUMBER	PART NUMBER	FSCM	USABLE ON CODE	U/M	QTY INC IN UNIT
2	1	XDFZZ		SMB294U59	8J063	PIN, STRAIGHT, HEADED	EA	2
2	2	PAFZZ	5310-00-045-5207	MS15795-908	96906	WASHER, FLAT	EA	2
2	3	PAFZZ	5305-00-249-0001	MS51963-11	96906	SETSCREW.....	EA	2
2	4	XDOOO		SMD294058	80063	CABLE, ASSY, PWR, ELEC	EA	1
2	5	PAOZZ	5935-00-283-3394	MS3057-12	96906	CLAMP, CABLE, EL.....	EA	1
2	6	PAOZZ	5935-00-227-8423	MS3106A-22-18P	96906	CONNECTOR, PLUG, ELE.....	EA	1
					7			



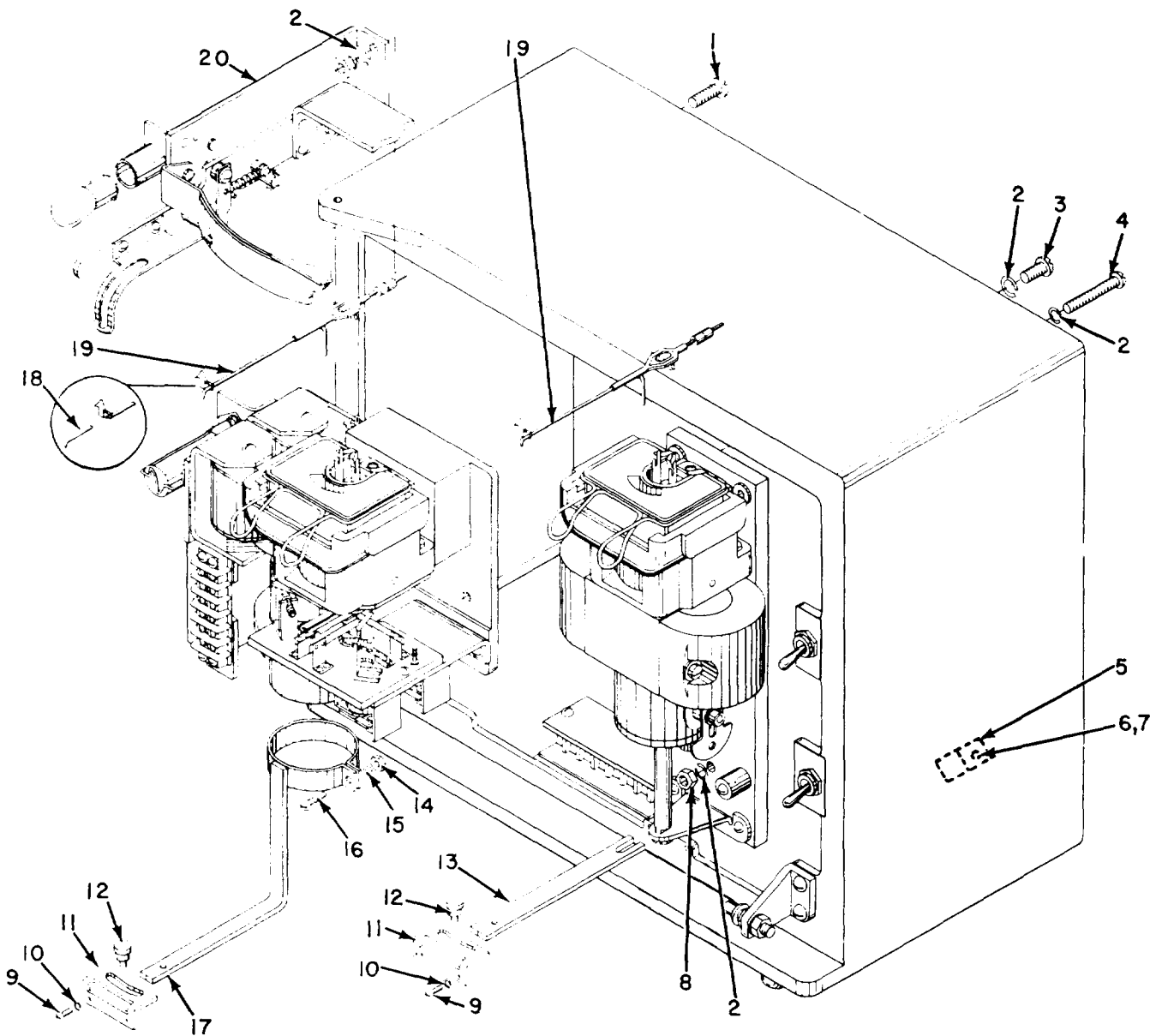
EL40E003

Figure 3. Recorders, Wind Direction and Speed RO-2/GMQ, RO-2A/GMQ, RO-2B/GMQ, RO-2C/GMQ, Door Assembly.

SECTION II

TM11-6660-231-24P

(1) ILLUSTRATION		(2)	(3)	(4)	(5)	(6) DESCRIPTION	(7)	(8)
(a) FIG NO.	(b) ITEM NO.	SMR CODE	NATIONAL STOCK NUMBER	PART NUMBER	FSCM	USABLE ON CODE	U/M	QTY INC IN UNIT
3	1	XDHZZ		SMB294072	80063	SHIELD, LH ON C MODEL USED ON ORDER NO. 18004-PP-62 AND 18006- PP-62 EA	1	
3	1	XDHZZ		SMB361827	80063	SHIELD USED ON CONTRACT NO DAAB05-69-C-0402 .5JT	EA	1
3	2	PAOZZ	66600-530-2040	SMC294070	80063	WINDOW, METER ON C MODEL USED ON ORDER NO. 18004-PP-62 AND 18006-PP-62.....	EA	1
3	3	XDHZZ		SM8361826	80063	RETAINER, GSKT ON C MODEL USED ON ORDER NO. 18004-PP-62 AND 18006-PP-2	EA	2
3	3	XDHZZ		SMB24073	80063	RETAINER, GSKT USED ON CONTRACT NO DAAB05-69-C-0402.....5JT	EA	2
3	4	XDOZZ		SMB294069	80063	PACKING MATERIAL ON C MODEL USED ON ORDER NO. 18004-PP-62 AND 18006-PP-62.....	EA	2
3	5	XDOZZ		SMB294068	80063	GASKET ON C MODEL USED ON ORDER NO. 18004-PP-62 AND 18006 PP-62	EA	2
3	6	PAOZZ	9390-00-176-1326	SMB294067	80063	GASKET ON C MODEL USED ON ORDER NO. 18004-PP-62 AND 18006- PP-62	EA	1
3	7	XDHZZ		SMD294066	80063	DOOR FRAME, METAL ON C MODEL USED ON ORDER NO 18004-PP-62 AND 18006-PP-62.....	EA	1
J	8	PAFZZ	5305-00-719-5329	MS51963-20	96906	SETSCREW ON C MODEL USED ON ORDER NO. 18004-PP-62 AND 18006 PP-62	EA	2
3	9	PAFZZ	6660-00-475-1925	SMB294080	80063	LATCH ON C MODEL USED ON ORDER NO.18004-PP-62 AND 18006-PP-62.....	EA	1
3	10	XDHZZ		SMB366833	80063	WASHER, SPG, TENSION ON C MODEL USED ON ORDER NO.18004-PP-62 AND 18006-PP-62	EA	1
3	11	PAFZZ	6660-00-475-1929	SMB294077	80063	HANDLE DOOR ON C MODEL USED ON ORDER NO. 18004-PP-62 AND 18006-PP-62	EA	1
3	12	PAFZZ	5305-00-889-3116	MS35225-13	96906	SCREW, MACHINE ON C MODEL USED ON ORDER NO. 18004-PP-62 AND 18006-PP-62	EA	8
3	13	PAFZZ	5310-00-551-7770	MS35337-40	96906	WASHER, LOCK ON C MODEL USED ON ORDER NO. 18004-PP-62 AND 18006-PP-62	EA	4
3	14	XDFZZ		SMB294076	80063	PLATE, IDENT ON C MODEL USED ON ORDER NO. 18004-PP-62 AND 18006-PP-62	EA	1
3	15	XDFZZ		SMB294075	80063	PLATE, IDENT ON C MODEL USED ON ORDER NO. 18004-PP-62 AND 18006-PP-62	EA	1
3	16	PAFZZ	5305-00-984-4983	MS35225-26	96906	SCREW, MACHINE ON C MODEL USED ON ORDER NO 18004-PP-62 AND 18006-PP-62	EA	4
3	17	XDHZZ		SMB361825	80063	RETAINER, GSKT ON C MODEL USED ON ORDER NO. 18004-PP-62 AND 18006-PP-62	EA	2
3	18	XDHZZ		SMB294071	80063	SHIELD, RH ON C MODEL USED ON ORDER NO. 18004-PP-62 AND 18006- PP-62	EA	1



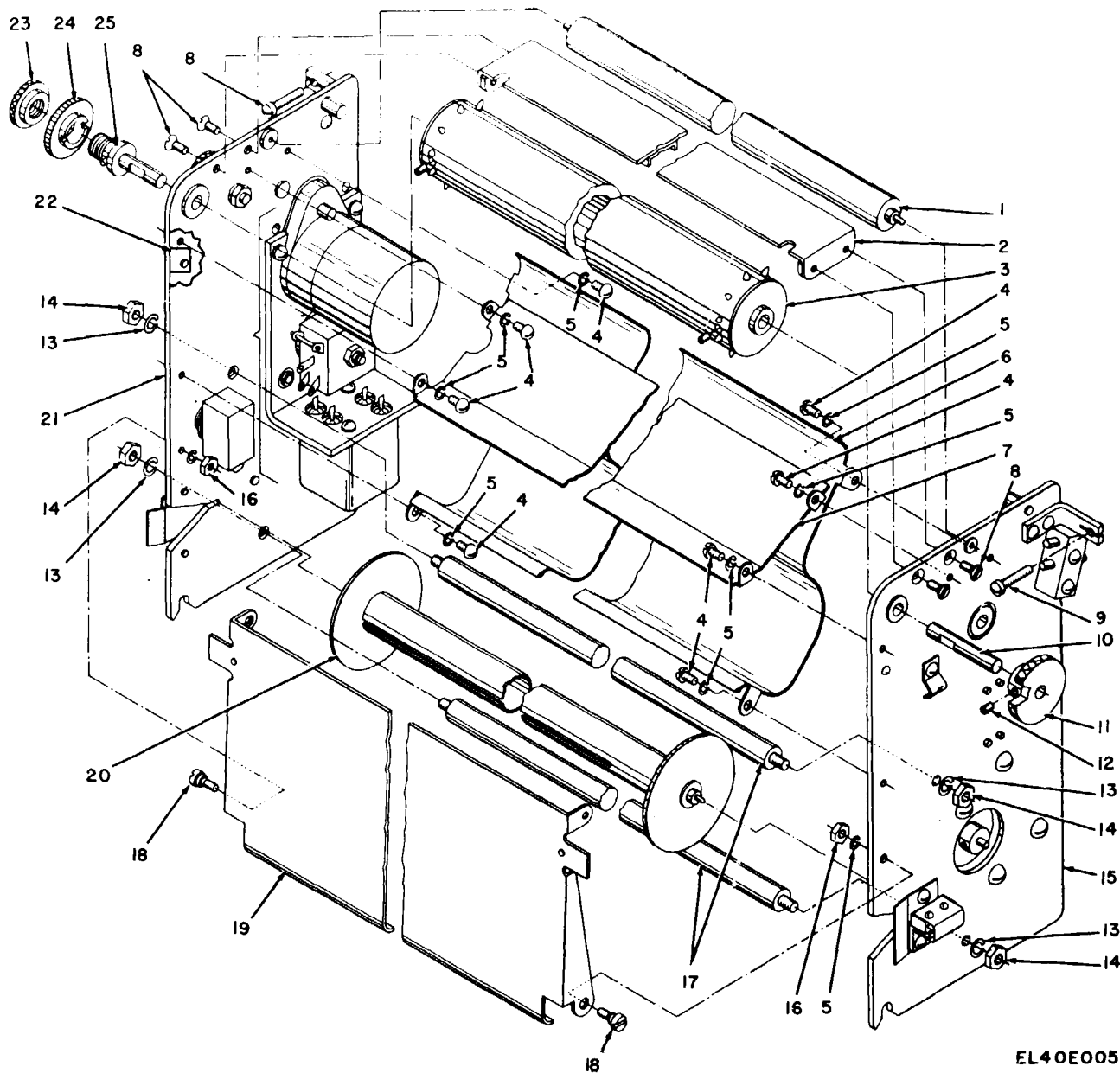
EL40E004

Figure 4. Recorders, Wind Direction and Speed RO-2/GMQ, RO-2A/GMQ, RO-2B/GMQ, RO-2C/GMQ, Miscellaneous Components.

SECTION II

TM11-6660-231-24P

(1) ILLUSTRATION		(2)	(3)	(4)	(5)	(6) DESCRIPTION	(7)	(8)
(a) FIG NO.	(b) ITEM NO.	SMR CODE	NATIONAL STOCK NUMBER	PART NUMBER	FSCM	USABLE ON CODE	U/M	QTY INC IN UNIT
4	1	PAFZZ	5305--00-988-1725	MS35225-81	96906	SCREW, MACHINE.....	EA	4
4	2	PAFZZ	5310-00-933-8121	NS35338-82	96906	WASHER, LOCK.....	EA	4
4	3	PAHZZ	5305-00-988-1724	MS35225-80	96906	SCREW, MACHINE.....	EA	3
4	4	XDHZZ		SMC366830-2	80063	SCREW, MACHINE.....	EA	1
4	5	XDFZZ		MS25281-5P	Yo906	CLAMP, LOOP.....	EA	2
4	6	PAFZZ	5305-00-889-3002	MS35225-42	96906	SCREW, MACHNE.....	EA	
4								
4	7	PAFZZ	5310-00-045-3299	MS35338-42	96906	WASHER, LOCK.....	EA	4
4	8	PAFZZ	5310-00-550-0777	MS35690-402	96906	NUT, PLAIN, HEXAGON USED ON CONTRACT NO. DAAB05-69-C-0402.....5JT	EA	4
4	8	PAHZZ	5310-00-761-6882	102-3B120	1349	NUT, PLAIN, HEXAGON USED ON C MODEL USED ON ORDER NO. 118004-PP-62 AND 18006-PP-62	EA	
1								
4	9	PAFZZ	5305-00-S93-0190	MS35225-14	96906	SCREW, MACHINE.....	EA	2
4	10	PAFZZ	5310-00-551-7770	MS35337-40	96906	WASHER, LOCK.....	EA	2
4	11	PAHZZ	6660-00-758-0065	R-683-A-N408	92071	SCALE ON C MODEL USED ON ORDER NO. 18004-PP-62 AND 18006-PP-62.....	EA	2
4	11	PAFZZ	6660-00-758-0065	SMB294062	80063	SCALE USED ON CONTRACT NO. DAAB05-69-C-0402.....5JT	EA	
EA	2							
4	12	PAFZZ	5305-00-550-0836	SMB294061	80063	THUMBSCREW.....	EA	2
4	13	PAFZZ	6660-00-399-7988	SMB294203	80063	BAR, LEVER.....	EA	1
4	14	PAFZZ	5310-00-934-9747	MS35649-62	96906	NUT, PLAIN, HEXAGON.....	EA	1
4	15	PAFZZ	5310-00-045-4007	MS35337-41	96906	WASHER, LOCK.....	EA	1
4	16	PAFZZ	5305-00-889-3001	MS35225-31	6906	SCREW, MACHINE.....	EA	1
4	17	XDFZZ		SMC294195	80063	LEVER ASSEMBLY.....	EA	1
4	18	PAOZZ	6660-00-663-7915	WYBUG	72264	PEN, RECORDER.....	EA	2
4	19	PAOZZ	6625-00-223-7303	SMB294063	80063	ARM, RECORDING PEN.....	EA	2
4	20	PAFH	6660-00-565-0238	SMD294054	80063	CHART-GUIDE PE.....	EA	1
					11			



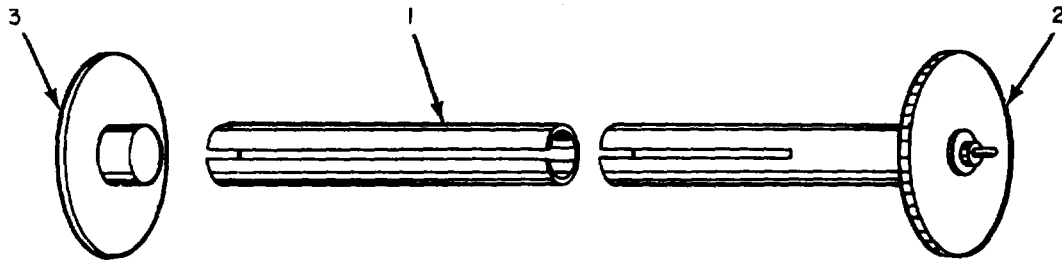
EL40E005

Figure 5. Recorders, wind Direction and Speed RO-2/GMQ, RO-2A/GMQ, RO-2B/GMQ, Rb-2C/GMO, Chart Drive Mechanism.

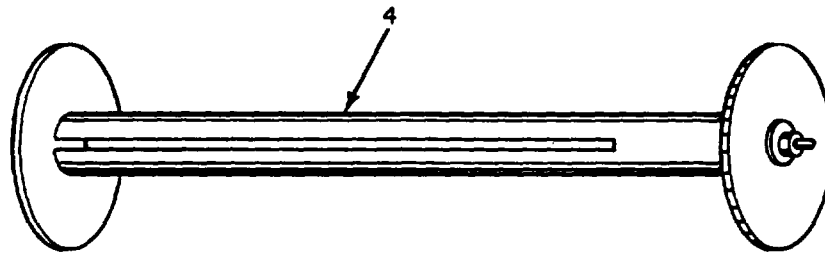
SECTION II

TM11-6660-231-24P

(1) ILLUSTRATION		(2)	(3)	(4)	(5)	(6)	(7)	(8)
(a) FIG NO.	(b) ITEM NO.	SMR CODE	NATIONAL STOCK NUMBER	PART NUMBER	FSCM	DESCRIPTION USABLE ON CODE	U/M	QTY INC IN UNIT
5	1	PAFZZ	6660-00-565-0231	R-683A-0409	92071	IDLER, ROLLER.....5JQ, 5JR, 5JS	EA	1
5	1	PAFZZ	6660-00-475-1913	SMB294228	80063	IDLER, ROLLER, SELEC..... 5JT	EA	1
5	2	XDHZZ		SMC294212	80063	BRACE, CROSSARM.....	EA	1
5	3	PAHZZ	6660-00-663-4712	SMD294209	80063	CHART, DRIVE, ROLLER.....	EA	1
5	4	PAFZZ	5305-00-984-4982	MS35225-25	96906	SCREW, MACHNE..... 5JQ, 5JR, 5JS	EA	6
5	5	PAFZZ	5310-00-045-4007	MS35337-41	96906	WASHERLOCK.....	EA	6
5	6	PAFZZ	6660-00-475-1896	SMD294226	80063	SHELF, CHART.....	EA	
1								
5	7	PAHZZ	6660-00-349-7964	516996	23667	GUIDE, CHART.....5JQ, 5JR, 5JS	EA	1
5	7	XDHZZ		SMC294225	80063	8RACKET, DRIVE, RLR..... 5JT	EA	1
5	8	PAFZZ	5305-00-957-6265	1535241-33	96906	SCREW, MACHINE.....	EA	4
5	9	PAHZZ	5305-00-993-1848	MS35226-65	96906	SCREW, MACHINE.....	EA	2
5	10	PAHZZ	6660-00-399-7944	517052-1	23667	SHAFT.....5JQ, 5JR, 5JS	EA	1
5	10	XDFZZ		SMB294207	80063	SHAFT, DRIVE..... 5JS, 5JT	EA	1
5	11	XDOZZ		SMB294206	80063	KNOB..... 5JS, 5JT	EA	1
5	11	XDFZZ		5169518	23667	KNOB..... 5JQ, 5JA	EA	1
5	12	PAFZZ	5305-00-719-5339	MS51963-22	96906	SETSCREW.....	EA	2
5	13	PAFZZ	5310-00-045-3296	MS35338-43	96906	WASHER, LOCK.....	EA	4
5	14	PAFZZ	5310-00-934-9751	MS35650-102	96906	NUT, PLAIN, HEXAGON.....	EA	4
5	15	XDFHH		SMC294231	80063	PLATE ASSY, RS.....	EA	1
5	16	PAFZZ	5310-00-934-9747	MS35649-262	96906	NUT, PLAIN, HEXAGON.....	EA	2
5	17	XDHZZ		SMC294227	80063	BRACE, CHART..... 5JS, 5JT	EA	2
5	17	XDFZZ		10-32NFX12	81349	STUD, SHOULDER.....5JQ, 5JR	EA	2
5	18	PAFZZ	5305-00-602-5116	SMB294223	80063	SCREW, SHOULDER..... 5JS, 5JT	EA	2
5	1a	XDHZZ		516946-A	23667	SCREW, SHOULDER..... 5JQ, 5JR	EA	2
5	19	PAFZZ	6660-00-565-0235	SMC294224	80063	PANEL, COVER ASSY.....	EA	1
5	20	PAOZZ	6660-00-399-7993	SM8294215	80063	TAKE-UP REEL ASSY.....	EA	1
5	21	XDFFH		SMC294238	80063	PLATE ASSY, LS.....	EA	1
5	22	XDFZZ		827-228-F13	27191	PLATE, INSTRUCTION USED ON CONTRACT NO. DAAB05-69-C-0402..... 5JT	EA	1
5	23	XDOZZ		SMB294204	80063	NUT, PLAIN, KNURLED.....	EA	1
5	24	PAHZZ	3020-00-936-8473	SMB191889	80063	GEAR, SPUR.....	EA	1
5	25	XDHZZ		683-A-0405	92071	SHAFT ASSEMBLY ON C MODEL USED ON ORDER NO. 18004-PP-62 AND 18006--PP-62..... 5JS, 5JT	EA	1
5	25	PAHZZ	6660-00-399--7995	SMB294208	80063	SHAFT, DRIVE ON C MODEL USED ON CONTRACT NO. DAAB05-69-C-0402.....5JQ, 5JR, 5JT	EA	1



EXPLODED VIEW



REEL ASSEMBLY

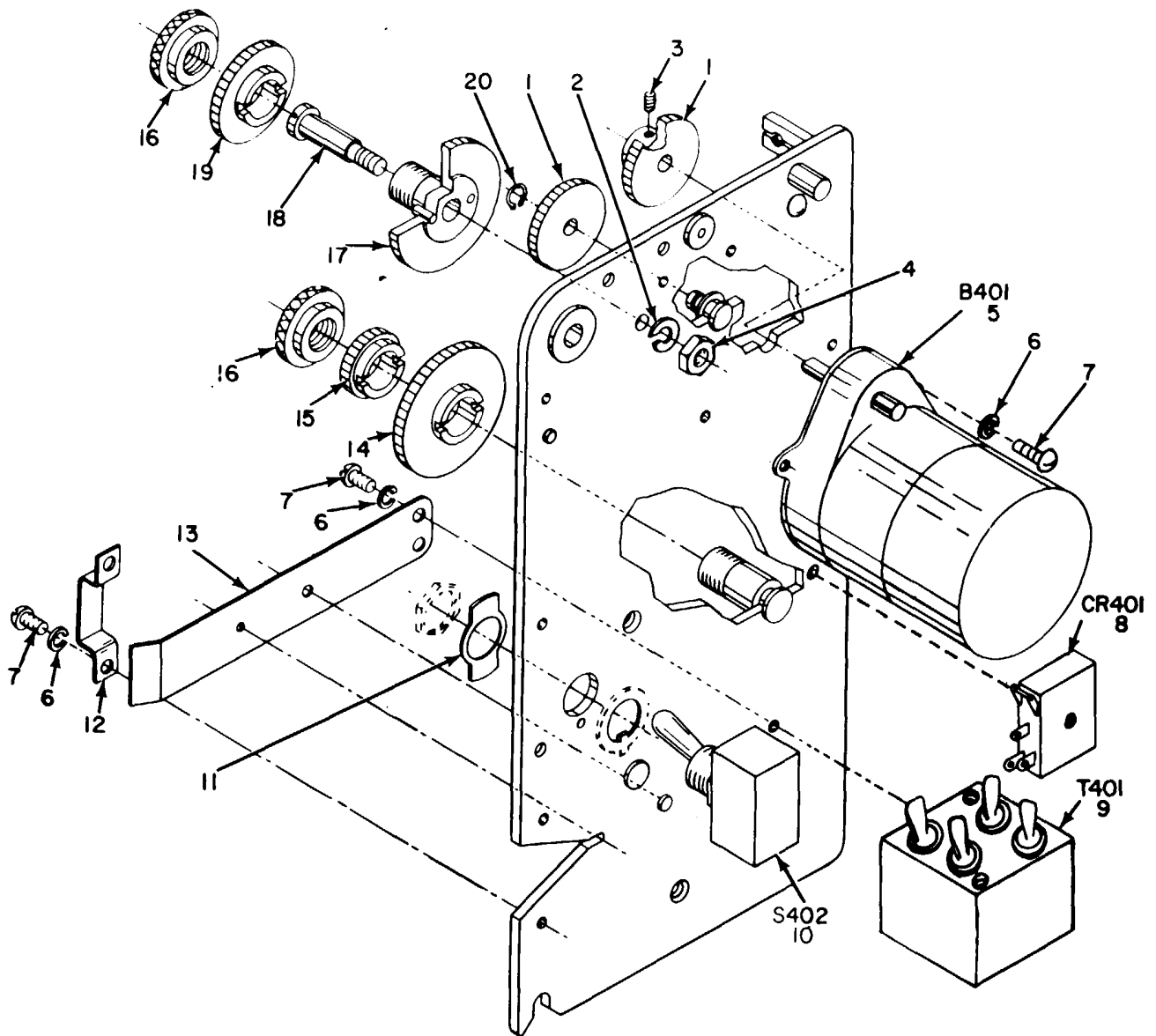
EL40E006

Figure 6. Recorders, Wind Direction and Speed RO-2/GMQ, RO-2A/GMQ, RO-2B/GMQ, RO-2C/GMQ, Take up Reels.

SECTION II

TM11-6660-231-24P

(1) ILLUSTRATION		(2)	(3)	(4)	(5)	(6)	(7)	(8)
(a) FIG NO.	(b) ITEM NO.	SMR CODE	NATIONAL STOCK NUMBER	PART NUMBER	FSCM	DESCRIPTION USABLE ON CODE	U/M	QTY INC IN UNIT
6	1	XDFZZ		SMB294216	80063	CORE, TAKE-UP REEL 5JT	EA	1
6	2	XDFZZ		SMB294221	80063	GEAR ASSY, TAKE-U..... 5JT	EA	1
6	3	PAFZZ	6660-00-399-7985	SMB294217	80063	GUIDE ASSY, TAKE-U..... 5JT	EA	1
6	4	PAFZZ	6660-00-399-7993	R-683-A413	92071	ROLLER, TAKE-U5JQ, 5JR, 5JS	EA	1
					15			



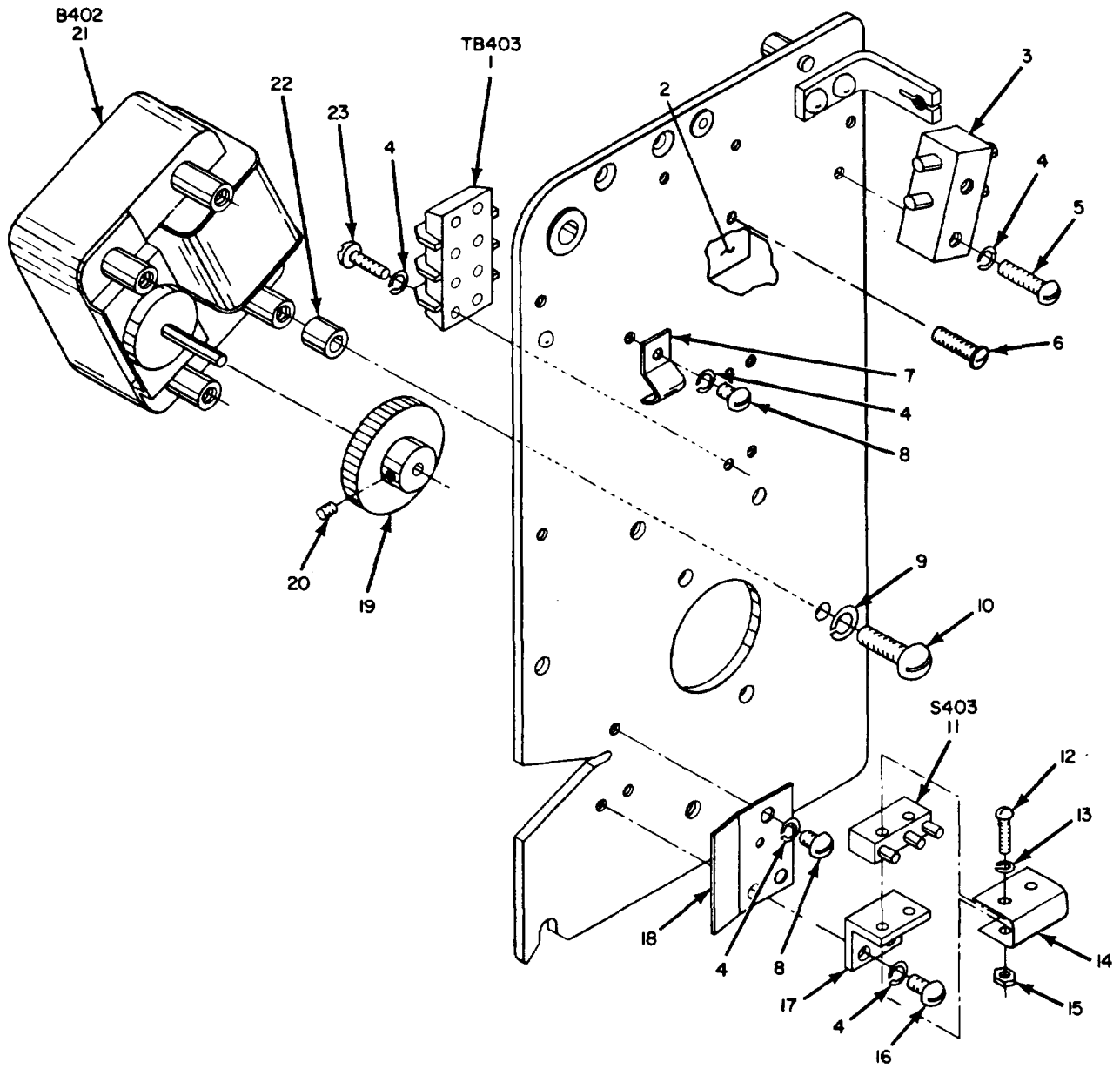
EL40E007

Figure 7. Recorders, Wind Direction and Speed RO-2/GMQ, RO-2A/GMQ, RO-2B/GMQ, RO-2C/GMQ, Left Plate Assembly

SECTION II

TM11-6660-231-24P

(1) ILLUSTRATION		(2)	(3)	(4)	(5)	(6) DESCRIPTION	(7)	(8)
(a) FIG NO.	(b) ITEM NO.	SMR CODE	NATIONAL STOCK NUMBER	PART NUMBER	FSCM	USABLE ON CODE	U/M	QTY INC IN UNIT
7	1	XDOZZ		SMB294205	80063	GEAR, SPUR	EA	2
7	2	PAFZZ	5310-00-045-3296	MS35338-43	6906	WASHER, LOCK	EA	1
7	3	PAFZZ	5305-00-717-6949	MS51017-10	96SO6	SETSCREW	EA	2
7	4	PAFZZ	5310-00-934-9765	MS35650-304	96506	NUT, PLAIN, HEXAGON	EA	1
7	5	PAHZZ	3010-00-330-9795	117P	14907	MOTOR, AC5J, 53JT	EA	1
7	S	XDHZZ		SMC24246	80063	DRIVE MOTR, DC RJS	EA	1
7	6	PAFZZ	5310-00-045-4007	MS35337-41	96906	WASHER, LOCK	EA	2
7	7	PAFZZ	5305-00-984-4982	MS35225-25	96906	SCREW, MACHINE	EA	3
7	7	XDFZZ		SMB294247	80u63	SELENIUM RECTIFIER 5JR, 5JS	EA	1
7	9	XDFZZ		SMB168574	60063	TRANSFORMER, PWR 5JR, 5JS	EA	1
7	10	PAFZZ	5930-00-655-1514	MS35058-22	969u6	SWITCH, TOGGLE USED ON CONTRACT NO. DAA805-69-C0402 5JT	EA	1
7	10	PAFZZ	5930-00-655-1582	MS35059-23	96906	SWITCH, TOGGLE ON C MODEL USED ON ORDER NO. 8004-PP-62 AND 8006-PP-62	EA	1
7	11	XDFZZ		SMB294103	80063	PLATE, IDENT	EA	1
7	12	XDFZZ		SMB168576	80063	BRACKET, DBL ANGLE	EA	1
7	13	XDFZZ	6660-00-399-7987	SMB168577	80063	LEVER, SPRING	EA	1
7	14	XDOZZ		SMB168584	80063	GEAR, SPUR	EA	1
7	15	PAOZZ	3020-00-203-1561	SMB168593	80363	GEAR, SPUR	EA	1
7	16	PAFZZ	5310-00-550-1350	SM8294204	80063	NUT, PLAIN, KNURLED 5JST	EA	3
7	16	XDFZZ		516952A	23667	NUT, PLAIN, KNURLED 5JQ, 5JP	EA	3
7	17	PAFZZ	3020-30-517-1188	SMB168580	80063	GEAR, SPUR	EA	1
7	18	XDFZZ		SMB168579	80063	SCREW, SHOULDER	EA	1
7	19	XDFZZ		SMB168578	8063	GEAR, SPUR	EA	1
7	20	PAFZZ	5365-00-282-1633	MS16633-1018	96906	RING, RETAINING ON C MODEL USED ON CONTRACT NO. DAAB05-69-C0402	EA	1
7	20	XDFZZ		5133-12	81349	RING, RETAINING USED ON ORDER NO. 18004-PP-62 AND 18006-PP-62 5JT	EA	1



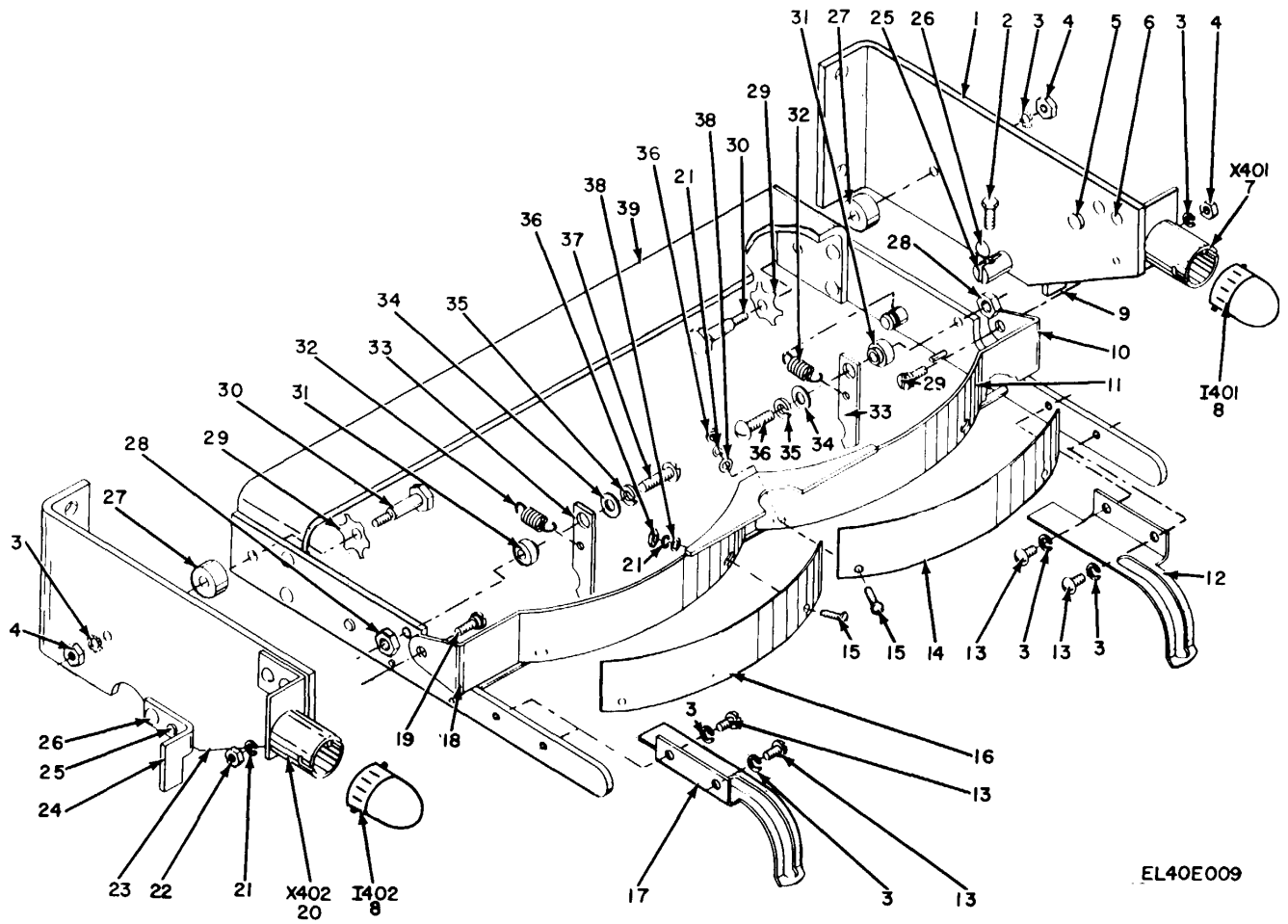
EL40E008

Figure 8. Recorders, Wind Direction and Speed RO-2/GMQ, RO-2A/GMQ, RO-2B/GMQ, RO-2C/GMQ, Right Plate Assembly,

SECTION II

TM11-6660-231-24P

(1) ILLUSTRATION		(2)	(3)	(4)	(5)	(6) DESCRIPTION	(7)	(8)
(a) FIG NO.	(b) ITEM NO.	SMR CODE	NATIONAL STOCK NUMBER	PART NUMBER	FSCM	USABLE ON CODE	U/M	QTY INC IN UNIT
8	1	PAFZZ	5940-00-983-6043	2-140	71765	TERMINAL BOARD.....	EA	1
8	2	XDFZZ		SMB361823-1	80063	GUIDE, CHART USED ON CONTRACT NO. DAAB05-69-C-0402.....5JT	EA	1
8	3	XDFZZ		SMB168594	80063	8LOCK, PLUG.....	EA	1
8	4	PAFZZ	5310-00-045-4007	MS35337-41	96906	WASHER, LOCK.....	EA	5
8	5	PAFZZ	5305-00-984-4992	MS35225-32	96906	SCREW, MACHINE.....	EA	4
B	6	PAFZZ	5305-00-984-4983	NS35225-26	96906	SCREW, MACHINE USED ON CONTRACT NO. DAA605-69-C-0402.....5JT	EA	2
8	7	XDFZZ		7502F	00194	STRAP, RETAINING.....	EA	1
8	8	PAFZZ	5305-00-984-4982	MS35225-25	96906	SCREW, MACHINE.....	EA	2
8	9	PAFZZ	5310-00-045-3296	MS35338-43	96906	WASHER, LOCK.....	EA	4
8	10	PAFZZ	5305-00-416-6297	MS35226-64	96906	SCREW, MACHINE.....	EA	4
8	11	PAFZZ	5930-00-646-4619	MS25085-1	96906	SWITCH, SENS USED ON CONTRACT NO. DAAB05-69-C-0402.....5JT	EA	1
8	11	PAFZZ	5930-00-548-4239	1SM1	91929	SWITCH, SENS ON C MCDEL USED ON ORDER NO. 18004-PP-62 AND 18006-PP-62.....	EA	1
8	12	PAFZZ	5305-00-558-3671	MS35225-7	96906	SCREW, MACHINE.....	EA	2
8	13	PAFZZ	5310-00-543-5060	MS35337-39	96906	WASHER, LOCK.....	EA	2
8	14	XDHZZ		SMB191881	80063	GUARD, SWTCH.....	EA	1
8	15	PAFZZ	5310-00-934-9738	MS35649-22	96906	NUT, PLAIN, HEXAGON.....	EA	2
8	16	PAFZZ	5305-00-984-4988	MS35225-28	96906	SCREW, MACHINE.....	EA	2
8	17	XDHZZ		SMB168590	80063	HOLDER, CONTACT.....	EA	1
8	18	XDHZZ		SMB168591	80063	RETAINER, PACKING.....	EA	1
8	19	PAFZZ	3020-00-203-1563	SMB168585	80063	GEAR, SPUR.....	EA	1
8	20	PAFZZ	5305-00-717-6949	MS51017-10	96906	SETSCREW.....	EA	2
8	21	PAFZZ	6105-00-686-5396	KYAB5929-3	05624	MOTOR, ALTERNATING C USED ON CONTRACT NO. DAAB05-69-C-0402.....5JT	EA	1
8	21	PAFZZ	6105-00-324-9070	SM8168587	80063	MOTOR, AC ON C MODEL USED ON ORDER NO. 18004-PP-62 AND 18006- PP-62.....	EA	1
8	22	XDFZZ		SM8168586	80063	SPACER, SLEEVE.....	EA	4
8	23	PAOZZ	5305-00-984-4989	MS535225-29	96906	SCREW, MACHINE.....	EA	4
					19			



EL40E009

Figure 9. Recorders, Wind Direction and Speed RO-2/GMQ, RO-2A/GMQ, RO-2B/GMQ, RO-2C/GMQ, Chart Guide Pen Assembly.

SECTION II

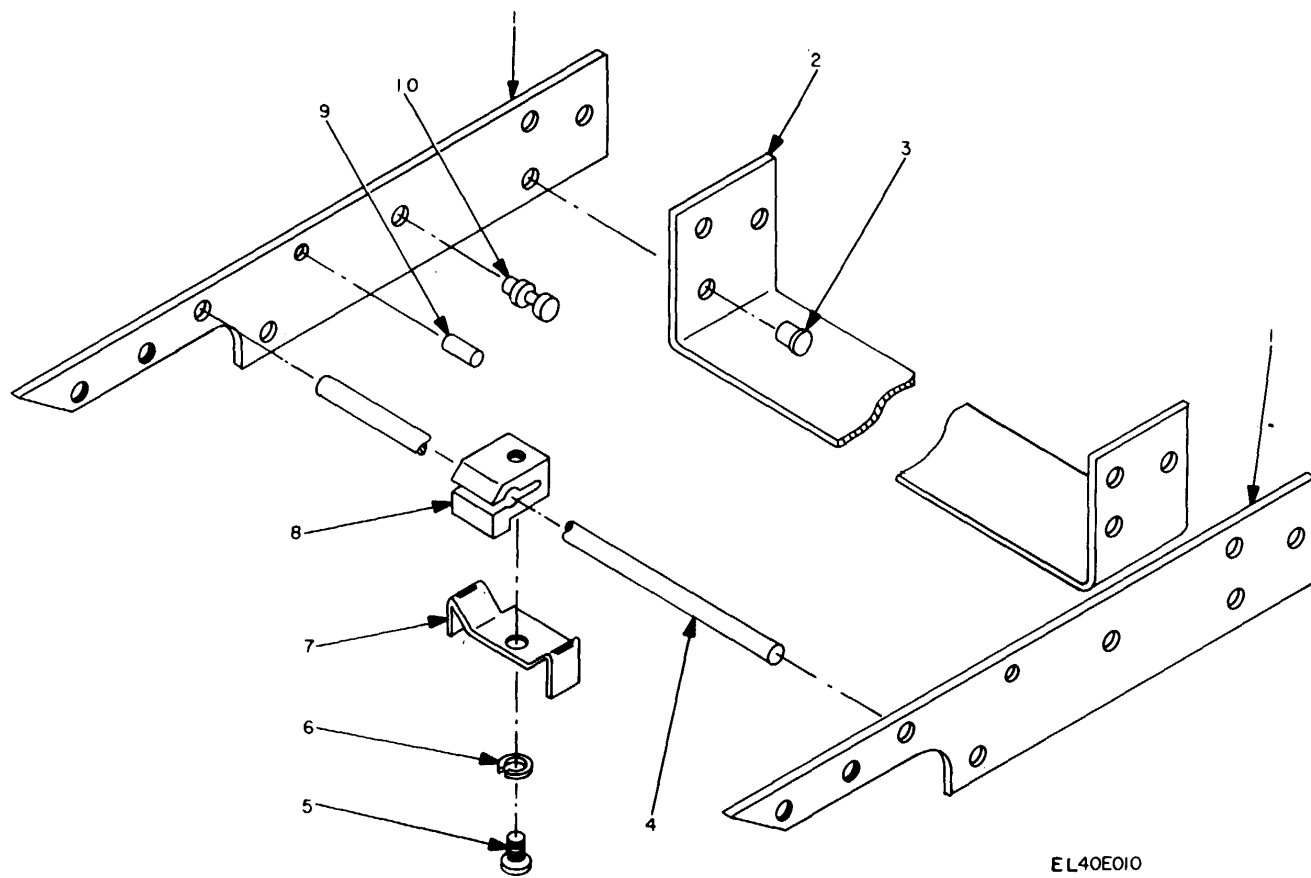
TM11-6660-231-24P

(1) ILLUSTRATION		(2)	(3)	(4)	(5)	(6) DESCRIPTION	(7)	(8)
(a) FIG NO.	(b) ITEM NO.	SMR CODE	NATIONAL STOCK NUMBER	PART NUMBER	FSCM	USABLE ON CODE	U/M	QTY INC IN UNIT
9	1	XDHZZ		SMC294117	80063	LAMP BRKT ASSY.....	EA	1
9	2	PAHZZ	5305-01-045-0080	SMB294120	80063	SCREW, ADJUSTING.....	EA	2
9	3	PAHZZ	5310-00-045-4007	MS35337-41	96906	WASHER, LOCK.....	EA	7
9	4	PAHZZ	5310-00-062-0912	MS35649-64	96906	NUT, PLAIN, HEXAGON.....	EA	3
9	5	XDHZZ		SMB294122	80063	STOP, RIVET.....	EA	1
9	6	PAHZZ	5320-00-619-0498	MS20426A4-4	96906	RIVET, SOLID.....	EA	4
9	7	XDHZZ		12-272XP99	95263	LAMPHOLDER.....	EA	1
9	8	PALZZ	6240-000-143-3060	MS15567-1	96906	LAMP, INCANDESCENT.....	EA	2
9	9	XDHZZ		SMB294119	80063	BRACKET, RGHT.....	EA	1
9	10	XDHZZ		SMB294118	80063	HOLDER ARM, RT.....	EA	1
9	11	PAFZZ	6660-00-565-0228	SMC294116	80063	HOLDER, ARM.....	EA	1
9	12	XDHZZ		SMB294137	80063	CHART HOLDER, RIGHT.....	EA	1
9	13	PAHZZ	5305-00-984-4983	MS35225-26	96906	SCREW, MACHINE.....	EA	4
9	14	XDOZZ		SMB29414	80063	DIAL, SCALE.....	EA	1
9	14	PAOZZ	6660-00-543-3051	SMB294114	80063	SCALE, WDSP, HMP.....	EA	1
9	15	PAOZZ	5305-00-993-0190	MS535225-14	96906	SCREW, MACHINE.....	EA	4
9	16	PAOZZ	5355-00-503-3050	SMB294115	80063	SCALE, WD.....	EA	1
9	17	PAHZZ	6660-00-565-0230	SMB294136	80063	CHART HOLDER, LEFT.....	EA	1
9	18	XDHZZ		SMB294132	80063	HOLDER, ARM, LEFT.....	EA	1
9	19	XDFZZ		SMB294113	80063	SCREW, SHOULDER.....	EA	2
9	20	XDHZZ		12-272XP100	95263	LAMPHOLDER.....	EA	1
9	21	PAFZZ	5310-00-551-7770	MS35337-40	96906	WASHER, LOCK.....	EA	2
9	22	PAFZZ	5310-00-934-9748	MS35649-44	96906	NUT, PLAIN, HEXAGON.....	EA	2
9	23	XDHZZ		SMC294131	80063	LAMP BRKT ASSY.....	EA	1
9	24	XDHZZ		SMB294133	80063	BRACKET, LEFT.....	EA	1
9	25	XDHZZ		SMB294121	80063	RIVET, STUD.....	EA	2
9	26	PAHZZ	5320-00-721-5211	MS20470A4-6	96906	RIVET, SOLID.....	EA	2
9	27	XDHZZ		SMB24124	80063	SPACER, SLEEVE.....	EA	2
9	28	PAFZZ	5310-00-934-9757	MS35649-282	96906	NUT, PLAIN, HEXAGON.....	EA	3
9	29	XDHZZ		3522-10-01	78189	WASHER, SPRING TENS.....	EA	2
9	30	XDHZZ		SMB294135	80063	SCREW, SHOULDER.....	EA	2
9	31	PAFZZ	5365-00-475-1843	SMB294139	80063	WASHER, SHLDRD.....	EA	2
9	32	PAOZZ	5360-00-664-7974	SMB294138	80063	SPRING, HLCL, CPRSN.....	EA	2
9	33	XDHZZ		SMB294140	80063	LATCH, SPRING, TNSN.....	EA	2
9	34	PAFZZ	5310-00-809-8544	MS27183-7	96906	WASHER, FLAT.....	EA	2
9	35	PAFZZ	5310-00-045-3299	MS35338-42	96906	WASHER, LOCK.....	EA	2
9	36	XDOZZ		MS35639-42	96906	NUT, PLAIN, HEXAGON.....	EA	2
9	37	PAFZZ	5305-00-984-6194	MS35225-46	96906	SCREW, MACHINE.....	EA	7
9	36	PAOZZ	5310-00-950-1310	MS27183-4	96906	WASHER, FLAT ON C MCOEL USED ON CONTRACT NO. DAAB06-6-9C-0402.....	EA	2
9	39	PAFHH	666-00-399-7989	517065-1-8	23667	LEVER ASSEMBLY..... 5J, 5J	EA	1
					21			

SECTION II

TM11-6660-231-24P

(1) ILLUSTRATION		(2)	(3)	(4)	(5)	(6)	(7)	(8)
(a) FIG NO.	(b) ITEM NO.	SMR CODE	NATIONAL STOCK NUMBER	PART NUMBER	FSCM	DESCRIPTION USABLE ON CODE	U/M	QTY INC IN UNIT
9	39	XDHHH		SMD294125	80063	LEVER ASSY,PENGUIDE..... 5JT	EA	1
					22/(23 blank)			



EL40E010

Figure 10. Recorders, Wind Direction and Speed RO-2/GMQ, RO-2A/GMQ, RO-2B/GMQ, RO-2C/GMQ, Lever Assembly.

SECTION II

TM11-6660-231-24P

(1) ILLUSTRATION		(2)	(3)	(4)	(5)	(6) DESCRIPTION	(7)	(8)
(a) FIG NO.	(b) ITEM NO.	SMR CODE	NATIONAL STOCK NUMBER	PART NUMBER	FSCM	USABLE ON CODE	U/M	QTY INC IN UNIT
10	1	XDHZZ		SMB294127	80063	BRACKET, MTG.....	EA	2
10	2	XDHZZ		SMC294126	80063	BRACE, PENGUIDE.....	EA	1
10	3	PAHZZ	5320-00-118-1995	MS2047084-6	96906	RIVET, SOLID.....	EA	6
10	4	XDFZZ		SMB294130	80063	BAR, PEN, LIFTING.....	EA	1
10	5	PAFZZ	5305-00-889-2997	MS35225-15	96906	SCREW, MACHINE..... 5JT	EA	1
10	6	PAFZZ	5310-00-551-7770	MS35337-40	96906	WASHER, LOCK..... 5JT	EA	1
10	7	PAFZZ	6660-00-475-1891	SMB191880	80063	STOP, PEN.....	EA	1
10	8	PAFZZ	6660-00-475-1936	SMB191879	80063	CLAMP, STOP, PEN..... 5JT	EA	1
10	9	XDHZZ		SMB294129	80063	PIN, STOP.....	EA	2
10	10	XDHZZ		SMB294128	80063	RIVET, STUD.....	EA	2
					25			

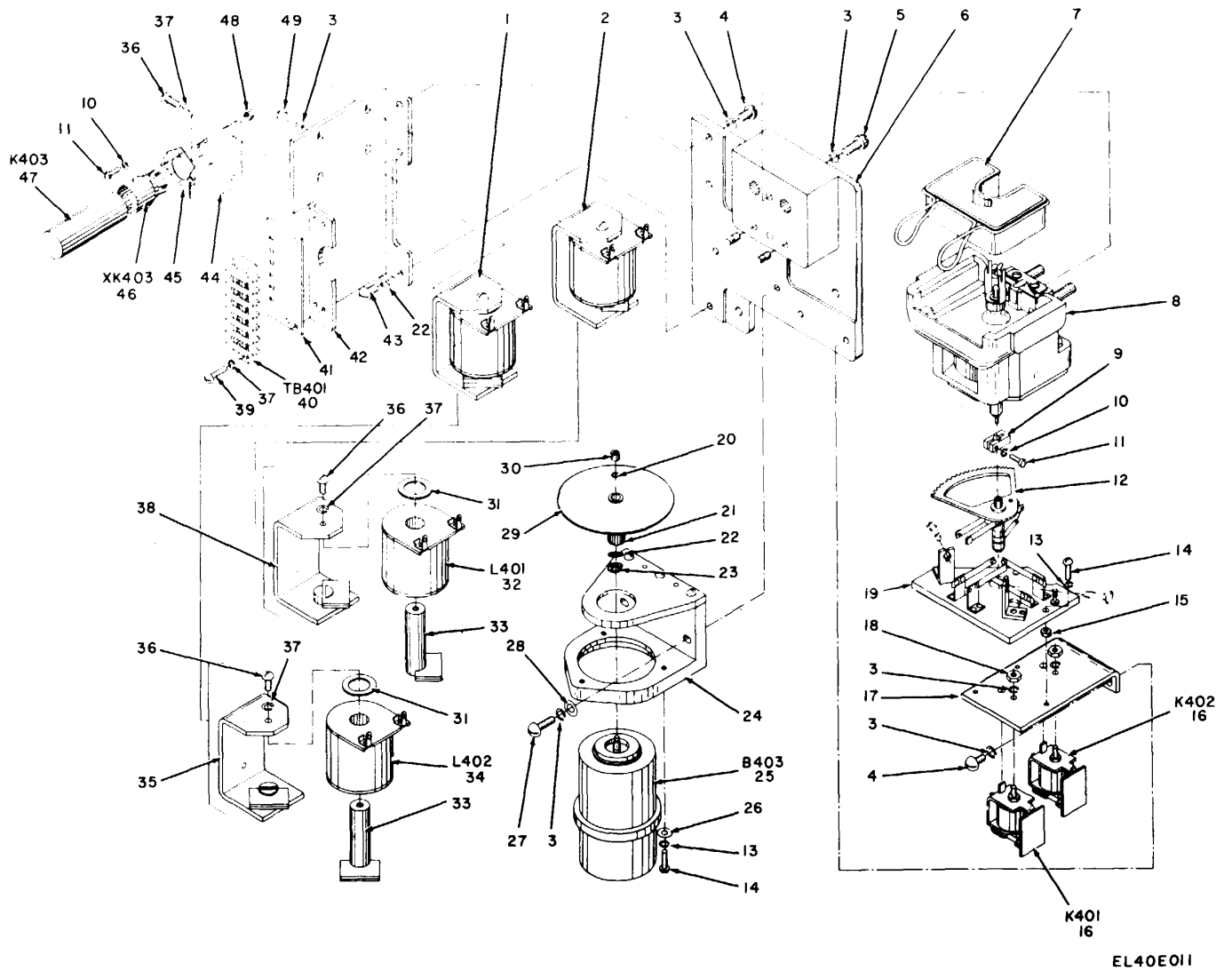


Figure 11. Recorders, Wind Direction and Speed RO-2/GMQ, RO-2A/GMQ, RO-2B/GMQ, RO-2C/GMQ, Wind Direction Mechanism.

SECTION II

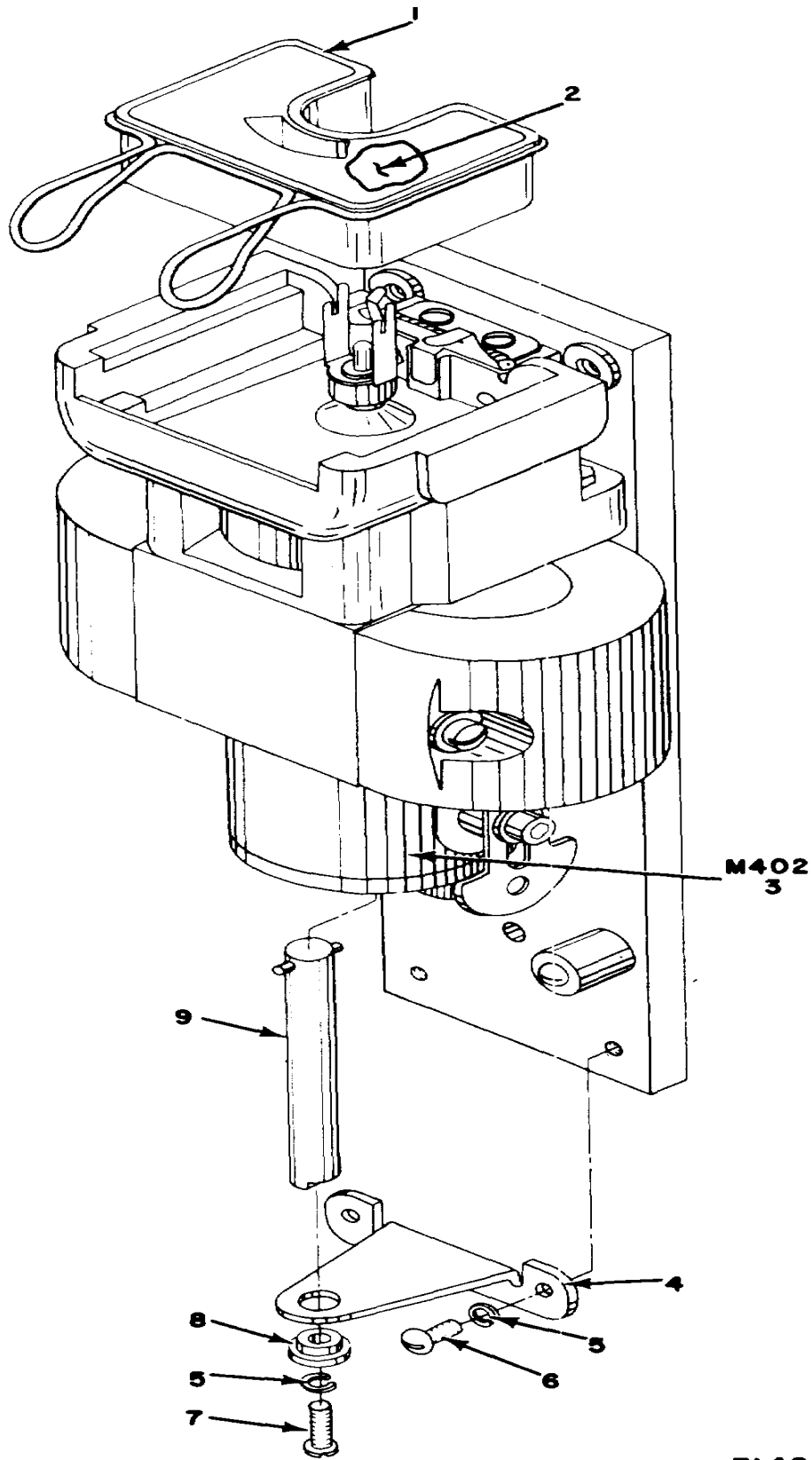
TM11-6660-231-24P

(1) ILLUSTRATION		(2)	(3)	(4)	(5)	(6) DESCRIPTION	(7)	(8)
(a) FIG NO.	(b) ITEM NO.	SMR CODE	NATIONAL STOCK NUMBER	PART NUMBER	FSCM	USABLE ON CODE	U/M	QTY INC IN UNIT
11	1	XDZZ		R-683-B-E411	92071	COIL ASSEMBLY.....5JQ,5JR,5JS	EA	1
11	1	PAFZZ	5950-00-472-7277	SMB294145	80063	COIL ASSEMBLY, RH..... 5JT	EA	1
11	2	PAFZZ	6660-00-565-0236	R-683-B-412	92071	COIL ASSEMBLY.....5JQ,5JR,5JS	EA	1
11	2	PAFZZ	5950-00-472-7278	SMB294157	80063	COIL ASSEMBLY, LH..... 5JT	EA	1
11	3	PAFZZ	5310-00-045-3296	MS35338-43	96906	WASHER, LOCK.....	EA	6
11	4	PAFZZ	5305-00-984-6208	MS35225-61	96906	SCREW, MACHINE.....	EA	2
11	5	PAFZZ	5305-00-952-1511	1001S-12-8	81349	SCREW, MACHINE.....	EA	2
11	6	XDFZZ		SMC294196	80063	HOUSING, WD DIR ASSY.....	EA	1
11	7	PAOZZ	6625-00-405-5753	8516	72264	INK TANK.....	EA	1
11	8	XDFZZ		11060	72264	METER MOVEMENT.....	EA	1
11	9	XDFZZ		SMB294173	80063	CLAMPING BLOCK.....	EA	1
11	10	PAFZZ	5310-00-551-7770	MS35337-40	96906	WASHER LOCK.....	EA	1
11	11	PAFZZ	5305-00-889-2997	MS35225-15	96906	SCREW, MACHINE.....	EA	1
11	12	XDFHH		SMC191867	80063	CONTACT AND SECTO.....5JQ,5JR,5JS	EA	1
11	13	PAFZZ	5310-00-045-4007	MS35337-41	96906	WASHER, LOCK.....	EA	3
11	14	PAFZZ	5305-00-889-3001	MS35225-31	96906	SCREW, MACHINE.....	EA	3
11	15	XDFZZ		SMB294185	80063	SPACER, SLEEVE.....	EA	3
11	16	PAFZZ	5945-00-660-6197	KA11A	77342	RELAY, ARMATURE.....	EA	2
11	17	XDHZZ		SMB294194	80063	BRACKET, RELAY.....5JQ, 5JR, 5JS	EA	1
11	17	XDHZZ		SMC191866	80063	BRACKET, RELAY..... 5JT	EA	1
11	18	XDFZZ		SMB191885	80063	RING, ELECTRICAL.....	EA	1
11	19	PAHZZ	660-00-475-1915	SMC294186	80063	CONTACT PLATE ASSY.....	EA	1
11	20	XDFZZ		SMB191883	8006	WASHER, RECESSED..... 5JT	EA	1
11	21	XDFZZ		SMB191887	80063	GEAR, SPUR..... 5JT	EA	1
11	22	XDFZZ		SMB191884	80063	WASHER, LOCK..... 5JT	EA	1
11	23	XDHZZ		SMB191882	80063	SPACER, SYNCHRO DISK..... 5JT	EA	1
11	24	XDFZZ		SMC294168	80063	SYNCHRO HOUSIN.....5JQ, 5JR, 5JS	EA	1
11	24	XDFZZ		SMC366828	80063	BRACKET, SYNCHRO, MTG USED ON CONTRACT NO. DAAB05-69-C-0402..... 5JT	EA	1
11	25	XDFZZ		SMD294167	80063	SYNCHRO, RECEIVER.....5JQ, 5JR, 5JS	EA	1
11	25	PAFZZ	5990-00-503-0588	113018	97497	SYNCHRO, RECEIVER..... 5JT	EA	1
11	26	PAFZZ	5310-00-983-8483	MS27183-5	96906	WASHER, FLAT.....	EA	3
11	27	PAFZZ	5305-00-984-6211	MS35225-64	96906	SCREW, MACHINE.....	EA	2
11	28	PAFZZ	5310-00-809-8546	MS27183-8	96906	WASHER, FLAT.....	EA	2
11	29	PAFZZ	6660-00-565-0234	R-683-A-0448	92071	DISC, DRIVING..... 5JS	EA	1
11	29	PAFZZ	6660-00-399-7981	517530-1-B	23667	DISC, DRIVING.....5JQ, 5JR	EA	1
11	29	XDFZZ		MSB191875	80063	DISC, DRIVING..... 5JT	EA	1
11	30	XDFZZ		SMB294166	80063	NUT, PLAIN, RND.....5JQ, 5JR, 5JS	EA	1
11	30	XDFZZ		SMB1918888	80063	NUT, SHLD, RND..... 5JT	EA	1
					27			

SECTION II

TM11-6660-231-24P

(1) ILLUSTRATION		(2)	(3)	(4)	(5)	(6) DESCRIPTION	(7)	(8)
(a) FIG NO.	(b) ITEM NO.	SMR CODE	NATIONAL STOCK NUMBER	PART NUMBER	FSCM	USABLE ON CODE	U/M	QTY INC IN UNIT
11	31	XDFZZ		SMB294156	80063	GASKET..... JQ, 5JR, 5JT	EA	4
11	32	XDFZZ		SMC294150	80063	COIL	EA	1
11	33	XDFZZ		SMB294154	80063	CORE ASSEMBLY	EA	2
11	34	PAFZZ	5950-00-648-1582	AP-517510	23667	COIL, EM.....	EA	1
11	35	XDFZZ		SMB294146	80063	BRACKET ASSY	EA	2
11	36	PAFZZ	5310-00-045-3299	MS35225-44	96906	SCREW, MACHINE.....	EA	2
11	37	PAFZZ	5310-00-045-3299	MS35338-42	96906	WASHER, LOCK.....	EA	3
11	38	XDFZZ		SMB294158	80063	BRACKET ASSY	EA	1
11	39	PAFZZ	5305-00-889-3000	MS35225-30	96906	SCREW, MACHINE.....	EA	4
11	40	PAOZZ	5940-00-983-6047	353-11-07-001	71785	TERMINAL BOARD.....	EA	1
11	41	XDFZZ		SMB294160	80063	TERMINAL MARKER.....	EA	1
11	42	XDFZZ		SMC294161	80063	BRACKET, MTG.....	EA	1
11	43	XDFZZ		MS35226-60	96906	SCREW, MACHINE.....	EA	1
11	44	XDHZZ		SMB294162	80063	BRACKET RELAY.....	EA	1
11	45	XDFZZ	5960-00-295-9067	XA-1	93929	RETAINER, RELAY.....	EA	1
11	46	PAFZZ	5935-00-260-0516	TS102P01	81349	SOCKET, RELAY ON C MODEL USED ON ORDER NO. 18004-PP-62 AND 18006-PP-62.....	NO	1
11	46	PAFZZ	5935-00-232-3756	TS102C01	81349	SOCKET, RELAY USED ON CONTRACT NO. DAA805-69-C-0402..... 5JT	EA	1
11	47	PAFZZ	5945-00577-1550	RM-20	81349	RELAY, THERMAL.....	EA	1
11	48	PAFZZ	5310-00-934-9739	MS35649-42	96906	NUT, PLAIN, HEXAGON.....	EA	2
11	49	PAFZZ	5305-00-889-3002	MS35225-42	96906	SCREW, MACHINE.....	EA	2
28/(29 blank)								



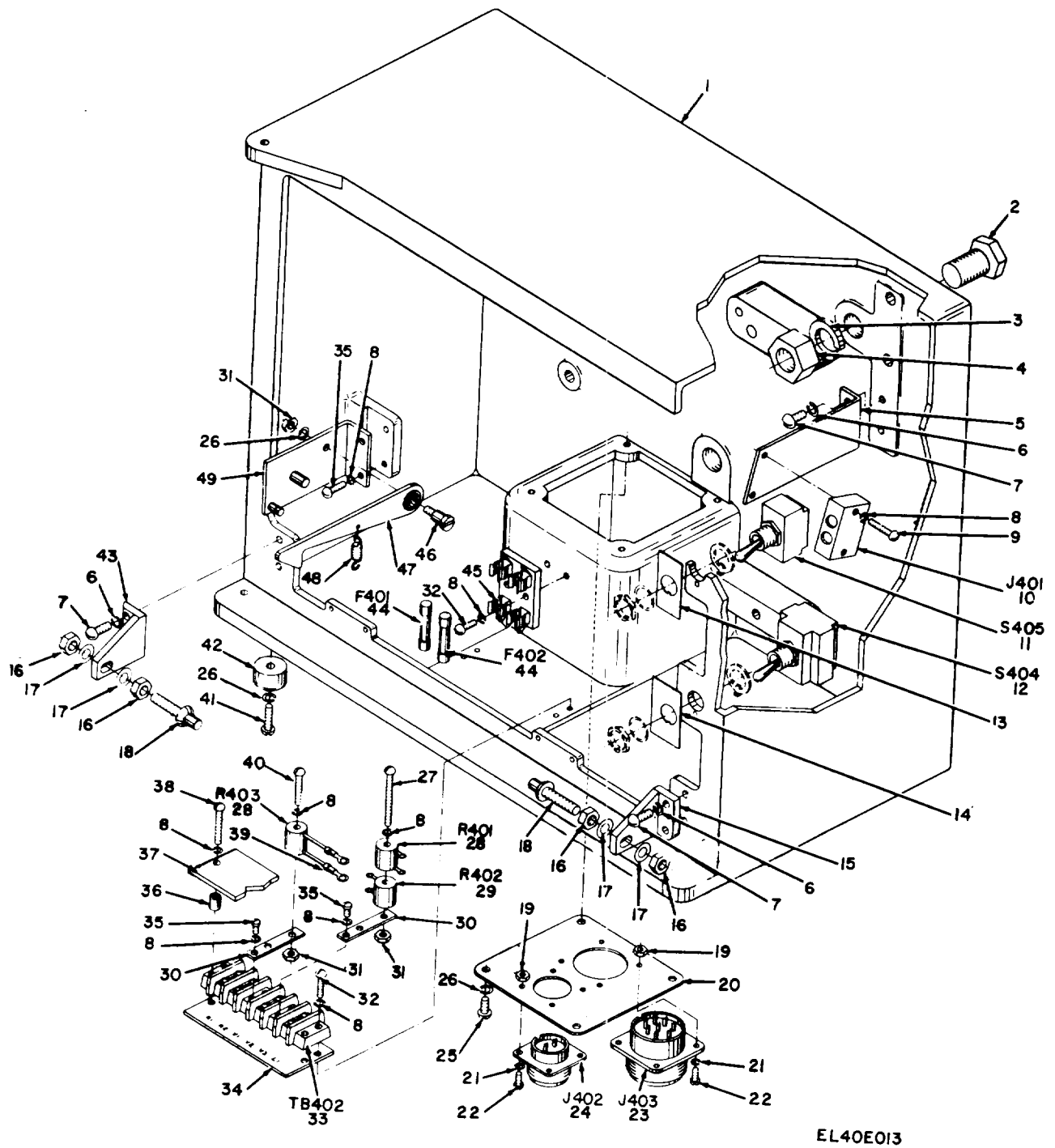
EL40E012

Figure 12. Recorders, Wind Direction and Speed RO-2/GMQ, RO-2A/GMQ, RO-2B/GMQ, RO-2C/GMQ, Wind Speed Mechanism.

SECTION II

TM11-6660-231-24P

(1) ILLUSTRATION		(2)	(3)	(4)	(5)	(6) DESCRIPTION	(7)	(8)
(a) FIG NO.	(b) ITEM NO.	SMR CODE	NATIONAL STOCK NUMBER	PART NUMBER	FSCM	USABLE ON CODE	U/M	QTY INC IN UNIT
12	1	PAOZZ	6625-00-05-5753	8516	72264	INK TANK.....	EA	1
12	2	PACZZ	7510-00-269-8135	SHB168598	80063	INK, RCDG.....	EA	1
12	3	PAHZZ	6660-00-663-8082	14003FR	72264	SPEED INOILATCR	EA	1
12	4	XDFZZ		S4B294199	80063	RACKET, MTG.....	EA	1
12	5	PAFZZ	5310-00-963-8483	MS27183-5	96906	WASHER, FLAT..... 5JT	EA	2
12	5	PAFZZ	5310-00-045-4007	RS35337-41	96906	WASHER, LOCK..... 5J,S5J P,5J	EA	3
12	6	PAFZZ	5305-00-889-3000	4535225-3J	96906	SCREW, MACHINE.....	EA	2
12	7	PAFZZ	5305-00-889-3001	HS35225-31	96906	SCREW, MACHINE.....	EA	1
12	8	XDFZZ		R-683-A	92071	BUSHING, SLEEVE..... 5JQ, 5JR, 5JS	SEA	1
12	8	PAFZZ	3120-00-475-1837	SBZ29419t	80063	BUSHING, SLEEVE..... 5JT	EA	1
12	9	XDFZZ		SH8294231	72264	SHAFT, SPEED.....	EA	1
					31			



EL40E013

Figure 13. Recorders, Wind Direction and Speed RO-2/GMQ, RO-2A/GMQ, RO-2B/GMQ
RO-2C/GMQ, Case Assembly

SECTION II

TM11-6660-231-24P

(1) ILLUSTRATION		(2)	(3)	(4)	(5)	(6)	(7)	(8)
(a) FIG NO.	(b) ITEM NO.	SMR CODE	NATIONAL STOCK NUMBER	PART NUMBER	FSCM	DESCRIPTION USABLE ON CODE	U/M	QTY INC IN UNIT
13	1	XDHZZ		SMD294083	80063	CASE, METER	EA	1
13	2	PAHZZ	6660-00-475-1859	SMB294060	80063	BOLT, MACHINE	EA	3
13	3	PAOZZ	5310-00-045-5001	MS35339-31	96906	WASHER, LOCK	EA	3
13	4	PAHZZ	5310-00-763-8920	MS35690-1002	96906	NUT, PLAIN, HEXAGON	EA	3
13	5	XDFZZ		SMB294107	80063	BRACKET, MTG	EA	1
13	6	PAFZZ	5310-00-045-3296	MS35338-43	96906	WASHER, LOCK	EA	6
13	7	PAFZZ	5305-00-986-6210	MS35225-63	96906	SCREW, MACHINE	EA	2
13	8	PAFZZ	5310-00-045-4007	MS35337-41	96906	WASHER, LOCK	EA	4
13	9	PAFZZ	5305-00-984-4992	MS35225-32	96906	SCREW, MACHINE	EA	2
13	10	PAOZZ	5330-00-396-0068	AP-517064	23667	CONNECTOR, RCPT, ELEC..... 5JQ, 5JR	EA	1
13	10	XDOZZ		R683-A-J401	92071	CONNECTOR, RCPT, ELEC..... 5JS	EA	1
13	10	PAFZZ	5935-00-560-2247	SMB294108	80063	CONNECTOR, RCPT, ELEC..... 5JT	EA	1
13	11	XDFZZ		MS32058-1	96906	SWITCH, TOGGLE ON C MODEL USED ON ORDER NO. 18004-PP-62 AND 18066-PP-62	EA	1
13	11	PAFZZ	5930-00-729-7335	82610	04009	SWITCH, TOGGLE USED ON CONTRACT NO. DAAB05-69-C-0402..... 5JT	EA	1
13	12	PAFZZ	5930-00-642-9253	7663-K4	15605	SWITCH, TOGGLE ON C MODEL USED ON ORDER NO. 18004-PP-62 AND 18066-PP-62	EA	1
13	12	PAFZZ	5930-00-642-9253	7663-K5	15605	SWITCH, TOGGLE USED ON CONTRACT NO. DAAB05-69-C-0402..... 5JT	EA	1
13	13	PAFZZ	9905-00-543-2036	SMB294105	80063	PLATE, IDENT	EA	1
13	14	XDOZZ		SMB294112	80063	PLATE, INSTRUCTION.....	EA	1
13	15	PAHZZ	6660-00-565-0232	SMB294093	83063	HOLDER, ARM, LH	EA	1
13	16	PAFZZ	5310-00-761-6882	MS35690-402	96906	NUT, PLAIN HEXAGON USED ON CONTRACT NO. DAA805-69-C-0402..... 5JT	EA	4
13	16	PAFZZ	5310-00-989-0908	MS35691-3	96906	NUT, PLAIN, HEXAGON ON C MODEL USED ONE ORDER NO. 18004-PP-62 AND 18006-PP-62	EA	4
13	17	PAFZZ	5310-00-823-8804	MS27183-9	96906	WASHER, FLAT	EA	4
13	18	XDHZZ		517053C	23667	STUD, SPCL	EA	2
13	18	PAFZZ	6660-00-475-1856	SMB294094	80063	PIVOT, ARM..... 5JT	EA	2
13	19	PAFZZ	5310-00-934-9748	MS35649-44	96906	NUT, PLAIN, HEXAGON ON C MODEL USED ONE ORDER NO. 18004-PP-62 AND 18006-PP-62	EA	8
13	19	XDFZZ		MS05649-42	96906	NUT, PLAIN, HEXAGON USED ON CONTRACT NO. DAAB05-69-C-0402	EA	8
13	20	XDFZZ		SMB294095	80063	PLATE, MTG, CONN.....	EA	1
13	21	PAFZZ	5310-00-551-7710	MS35337-40	96906	WASHER, LOCK	EA	8
13	22	PAFZZ	5305-00-889-2997	MS35225-15	96906	SCREW, MACHINE	EA	8
13	23	XDOZZ		AN3102A-22-18S	88044	CONNECTOR, RCPT, ELEC ON C MODEL USED ON ORDER NO. 18004-PP-62 AND 18066-PP-62	EA	1
13	23	PAFZZ	5935-00-853-3377	MS3102R-22-18S	96906	CONNECTOR, RCPT, ELEC USED ON CONTRACT NO. DAAB05-69-C-0402..... 5JT	EA	1
13	24	PAOZZ	5935-00-839-2508	AN3102A-16S-4P	88044	CONNECTOR, RCPT, ELEC ON C MODEL USED ON ORDER NO. 18004-PP-62 AND 18006-PP-62	EA	1
13	24	PAFZZ	5935-00-839-2508	MS3102R-16S-4P	96906	CONNECTOR, RCPT, ELEC USED ON CONTRACT NO DAAB05-69-C-0402..... 5JT	EA	1
13	25	PAFZZ	5305-00-984-6196	MS35225-43	96906	SCREW, MACHINE	EA	4
13	26	PAFZZ	5310-00-045-3299	MS35338-42	96906	WASHER, LOCK	EA	5

SECTION II

TM11-6660-231-24P

(1) ILLUSTRATION		(2)	(3)	(4)	(5)	(6) DESCRIPTION	(7)	(8)
(a) FIG NO.	(b) ITEM NO.	SMR CODE	NATIONAL STOCK NUMBER	PART NUMBER	FSCM	USABLE ON CODE	U/M	QTY INC IN UNIT
13	27	PAFZZ	5305-00-984-6223	MS35225-36	96906	SCREW, MACHINE.....	EA	2
13	28	PAFZZ	5905-00-101-5140	RB16J15330D	81349	RESISTOR, FXD, WW USED ON CONTRACT NO. DAAB05-69-C-0402 5JT	EA	2
13	28	XDFZZ		RB16J2300D	81349	RESISTOR, FXD, WW ON C MODEL USED ON ORDER NO. 18004-PP-62 AND 18006-PP-62	EA	2
13	29	PAFZZ	5905-00-299-7976	BX-183-J	54294	RESISTOR, FXD, WW	EA	1
13	30	XDFZZ		SMB294099	80063	PLATE, MTG	EA	1
13	31	PAFZZ	5310-00-934-9747	MS35649-262	96906	NUT, PLAIN, HEXAGON.....	EA	2
13	32	PAFZZ	5305-00-889-3001	MS35225-31	96906	SCREW, MACHINE.....	EA	2
13	33	PAFZZ	5940-00-983-6084	6-141	71785	TERMINAL BOARD.....	EA	1
13	34	XDFZZ		SMB294097	80063	PLATE, TERM, MKG.....	EA	1
13	35	PAFZZ	5305-00-984-4989	MS35225-29	96906	SCREW, MACHINE.....	EA	4
13	36	XDHZZ		SMB294100	80063	SPACER, SLEEVE.....	EA	2
13	37	XDHZZ		SMB294101	80063	COVER, TERM BD.....	EA	1
13	38	PAOZZ	5305-00-984-6222	MS35225-35	96906	SCREW, MACHINE.....	EA	2
13	39	PAFZZ	5940-00-813-0698	MS25036-1	96906	TERMINAL, LUG 5JT	EA	4
13	39	XDFZZ		31269	81349	TERMINAL, LUG 5JQ, 5JR, 5JS	EA	2
13	40	PAFZZ	5305-00-043-6668	MS35225-33	96906	SCREW, MACHINE.....	EA	1
13	41	PAOZZ	5305-00-984-6194	MS35225-46	96906	SCREW, MACHINE.....	EA	4
13	42	PAOZZ	5340-00-291-3650	18	70485	BUMPER, RUBBER USED ON CONTRACT .. NO DAAB 05-69-C-0402 5JT	EA	4
13	42	PAOZZ	5340-00-889-3245	25X	70485	BUMPER, RUBBER ON C MODEL USED ON ORDER NO 18004-PP-62 AND 18006-PP-62	EA	4
13	43	XDHZZ		SMB294102	80063	HOLDER, ARM, RH.....	EA	1
13	44	PACZZ	5920-00-284-9220	F02B250V1A	81349	FUSE, CARTRIDGE USED ON CONTRACT NO. DAAB05-69-C-0402..... 5JT	EA	2
13	44	XDCZZ		F02G1R00B	81349	FUSE, CARTRIDGE ON C MODEL USED ON ORDER NO. 18004-PP-62 AND 18006-PP-62	EA	2
13	45	PAFZZ	5920-00-221-5673	357002	72915	FUSEHOLDER	EA	2
13	46	XDFZZ		SMB294091	80063	SCREW, SHOULDER	EA	1
13	47	PAFZZ	6660-00-399-7990	SMB294088	80063	LATCH, RIM	EA	1
13	48	PAFZZ	5360-00-664-2134	SMB294092	80063	SPRING, HLCPS.....	EA	1
13	49	XDFZZ		SMB294084	80063	BRACKET, MTG.....	EA	1
34/(35 blank)								

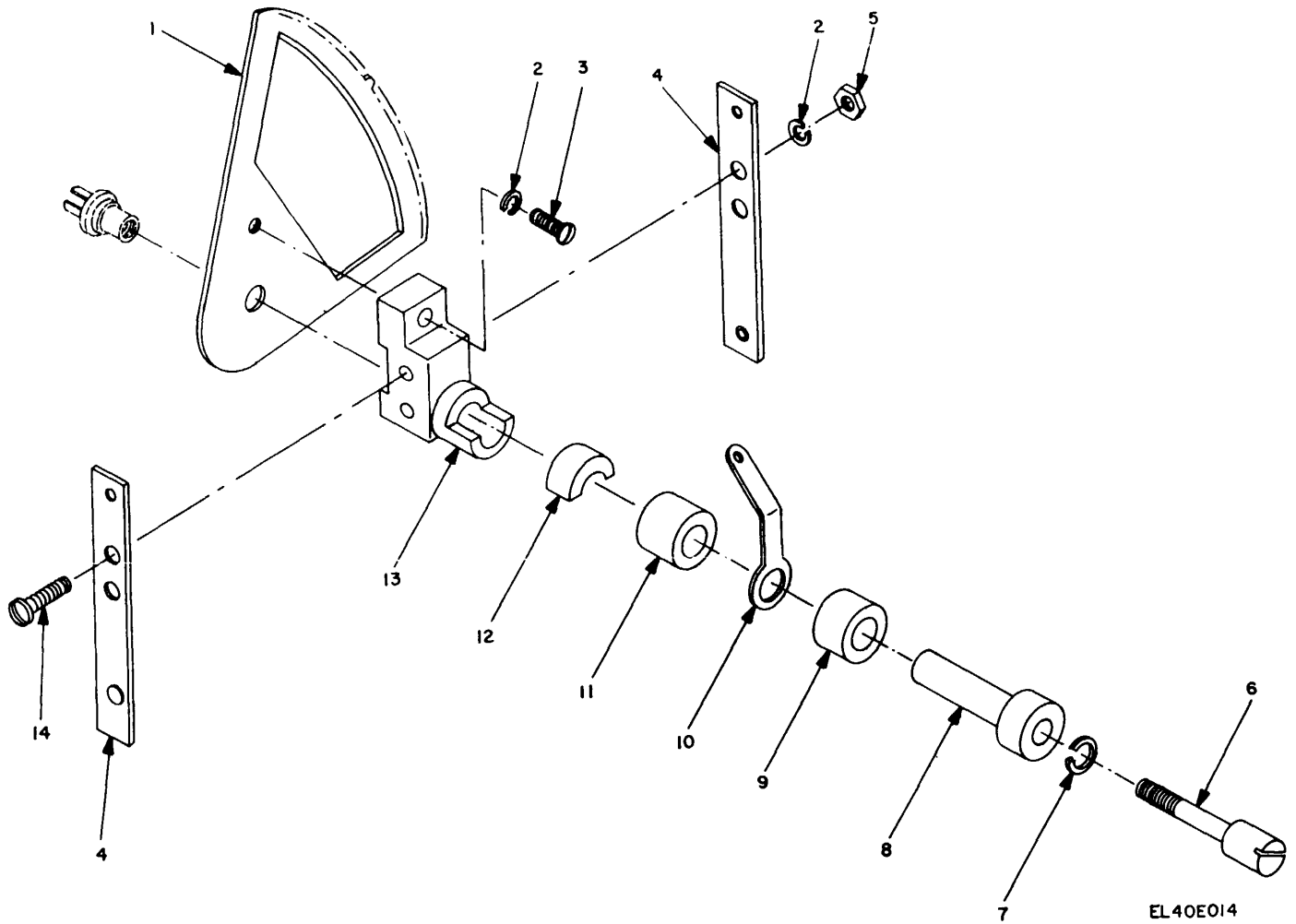
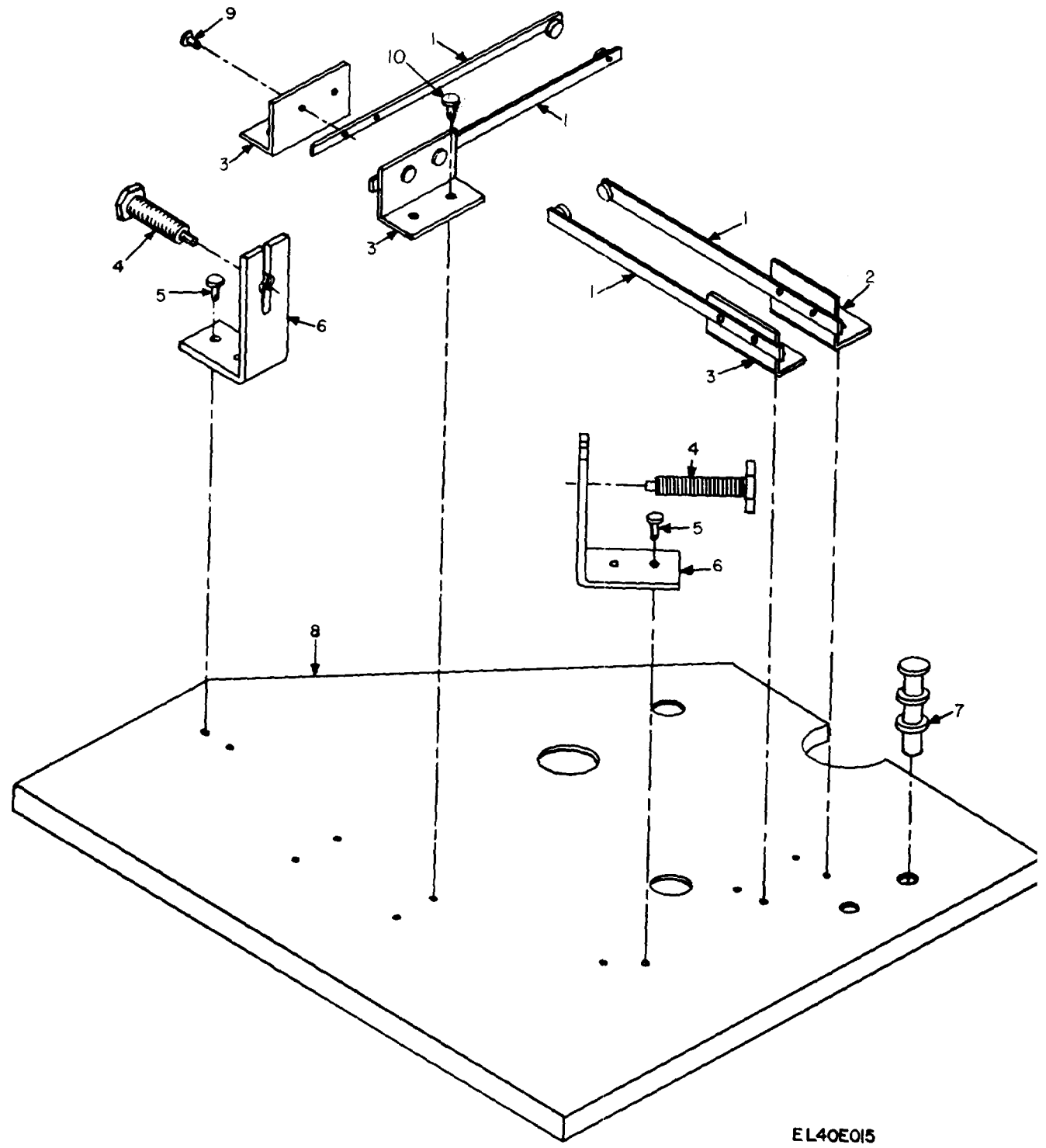


Figure 14. Recorders, Wind Direction and Speed. RO-2/GMQ, RO-2A/GMQ, RO-2B/GMQ, RO-2C/GMQ, Contact and Sector Assembly.

SECTION II

TM11-6660-231-24P

(1) ILLUSTRATION		(2)	(3)	(4)	(5)	(6) DESCRIPTION	(7)	(8)
(a) FIG NO.	(b) ITEM NO.	SMR CODE	NATIONAL STOCK NUMBER	PART NUMBER	FSCM	USABLE ON CODE	U/M	QTY INC IN UNIT
14	1	PAHZZ	6660-00-475-1911	SMB191870	80063	SECTOR, GEAR ASSY.....	5JT	EA 1
14	2	XDFZZ		104-2B-3R	81349	WASHER, LOCK.....	5JT	EA 2
14	3	XDFZZ		100-7B3-5	81349	SCREW, MACHINE.....	5JT	EA 1
14	4	PAFZZ	5999-00-396-3460	SMB191873	80063	CONTACT, ELEC.....	5JT	EA 2
14	5	XDFZZ		102-3B-3	81349	NUT, PLAIN, HEXAGON.....	5JT	EA 2
14	6			SMB191876	80063	SCREW, SECTOR, SHAFT.....	5JT	EA 1
14	7	PAFZZ	5310-00-933-8118	MS35338-78	96906	WASHER, LOCK.....	5JT	EA 1
14	8	PAFZZ	6660-00-475-1912	SMB294184	80063	SHAFT, SECTOR.....	5JT	EA 1
14	9	PAFZZ	6660-00-475-1930	SMB294183	80063	RING, ELEC, CONTACT.....	5JT	EA 1
14	10	PAFZZ	5940-00-537-2539	SMC294182	80063	TERMINAL, LUG.....	5JT	EA 1
14	11	XDFZZ		SMB191885	80063	RING, ELECTRICAL.....	5JT	EA 1
14	12	XDFZZ		SMB294181	80063	INSULATOR, DISK.....	5JT	EA 1
14	13	XDFZZ		SMB294178	80063	INSULATOR, STDF.....	5JT	EA 1
14	14	PAFZZ	5305-00-840-3956	MS35214-7	96906	SCREW, MACHINE.....	5JT	EA 2
					37			



EL40E015

Figure 15. Recorders, Wind Direction and Speed RO-2/GMQ, RO-2A/GMQ, RO-2B/GMQ, RO-2C/GMQ, Contact Plate Assembly.

SECTION II

TM11-6660-231-24P

(1) ILLUSTRATION		(2)	(3)	(4)	(5)	(6) DESCRIPTION	(7)	(8)
(a) FIG NO.	(b) ITEM NO.	SMR CODE	NATIONAL STOCK NUMBER	PART NUMBER	FSCM	USABLE ON CODE	U/M	QTY INC IN UNIT
15	1	XDHZZ		SMB191871	80063	CONTACT, ELEC.....	5JT	EA 4
15	2	XDHZZ		SMB294189	80063	BRACKET, CONTACT	5JT	EA 1
15	3	XDHZZ		SMB294190	80063	BRACKET, CONTACT	5JT	EA 3
15	4	PAFZZ	5999-00-465-1290	SMB191872	80063	CONTACT ASSY.....	5JT	EA 2
15	5	XDHZZ		MS2045006B12	96906	RIVET, SOLID	5JT	EA 4
15	6	XDHZZ		SMB294188	80063	BRACKET, CONTACT	5JT	EA 2
15	7	XDFZZ	5940-00-82-4892	MS17122-18	96906	TERMINAL, STUD.....	5JT	EA 1
15	8	XDHZZ		SMC294187	80063	INSULATOR PLATE.....	5JT	EA 1
15	9	XDHZZ		SMB366829	80063	EYELET.....	5JT	EA 8
15	10	PAHZZ	5320-00-800-4819	MS2045006B10	96906	RIVET, SOLID	5JT	EA 8
					39			

SECTION IV. NATIONAL STOCK NUMBER AND PART NUMBER INDEX

PART NUMBER	FSCM	FIG. NO.	ITEM NO.	PART NUMBER	FSCM	FIG. NO.	ITEM NO.
MS35649-42	96906	11	48	SMB294092	80063	13	48
MS35649-44	96906	9	22	SMB294093	80063	13	15
MS35649-44	96906	13	19	SMB294094	80063	13	18
MS35649-62	96906	4	14	SMB294095	80063	13	20
				SMB294097	80063	13	34
				SMB294099	80063	13	30
MS35649-64	96906	9	4	SMB294100	80063	13	36
				SMB294101	80063	13	37
MS35650-102	96906	5	14	SMB294102	80063	13	43
MS35650-304	96906	7	4	SMB294103	80063	7	11
MS35690-1002	96906	13	4	SMB294105	80063	13	13
MS35690-402	96906	4	8	SMB294107	80063	13	5
MS35690-402	96906	13	16	SMB294108	80063	13	10
MS35691-3	96906	13	16	SMB294112	80063	13	14
MS51017-10	96969	7	3	SMB294113	80063	9	19
MS51017-10	96906	8	20	SMB294114	80063	9	14
				SMB294115	80063	9	16
				SMB294118	80063	9	10
MS51963-20	96906	3	8	SMB294119	80063	9	9
R-683-A	92071	12	8	SMB294120	80063	9	2
R-683-A-N408	92071	4	11	SMB294121	80063	9	25
R-683-A-0448	92071	11	29	SMB294122	80063	9	5
R-683-A410	92071	6	4	SMB294124	80063	9	27
R-683-B-E411	92071	11	1	SMB294127	80063	10	1
R-683-B-412	92071	11	2	SMB294128	80063	10	10
R-683A-0409	92071	5	1	SMB294129	80063	10	9
RB16J15330D	81349	13	28	SMB294130	80063	10	4
RB16J2300D	81349	13	28	SMB294132	80063	9	18
RM-20	81349	11	47	SMB294133	80063	9	24
R683-A-J401	92071	13	10	SMB294135	80063	9	30
SMB158574	80063	7	9	SMB294136	80063	9	17
SMB168576	80063	7	12	SMB294137	80063	9	12
SMB158577	80063	7	13	SMB294138	80063	9	32
SMB168578	80063	7	19	SMB294139	80063	9	31
SMB168579	80063	7	18	SMB294140	80063	9	33
SMB168580	80063	7	17	SMB294141	80063	9	14
SMB168584	80063	7	14	SMB294145	80063	11	1
SMB168585	80063	8	19	SMB294146	80063	11	35
SMB168586	80063	8	22	SMB294154	80063	11	33
SMB168587	80063	8	21	SMB294156	80063	11	31
SMB168590	80063	8	17	SMB294157	80063	11	2
SMB168591	80063	8	18	SMB294158	80063	11	38
SMB168593	80063	7	15	SMB294160	80063	11	41
SMB168594	80063	8	3	SMB294162	80063	11	44
SMB168598	80063	12	2	SMB294166	80063	11	30
SMB191870	80063	14	1	SMB294173	80063	11	9
SMB191871	80063	15	1	SMB294178	80063	14	13
SMB191372	80063	15	4	SMB294181	80063	14	12
SMB191873	80063	14	4	SMB294183	80063	14	9
SMB191875	80063	11	29	SMB294184	80063	14	8
SMB191876	80063	14	6	SMB294185	80063	11	15
SMB191879	80063	10	8	SMB294188	80063	15	6
SMB191880	80063	10	7	SMB294189	80063	15	2
SMB191881	80063	8	14	SMB294190	80063	15	3
SMB191882	80063	11	23	SMB294194	80063	11	17
SMB191883	80063	11	20	SMB294198	80063	12	8
SMB191884	80063	11	22	SMB294199	80063	12	4
SMB191885	80063	11	18	SMB294201	72264	12	9
SMB191885	80063	14	11	SMB294203	80063	4	13
SMB191887	80063	11	21	SMB294204	80063	5	23
SMB191888	80063	11	30	SMB294204	80063	7	16
SMB191889	80063	5	24	SMB294205	80063	7	1
SMB294059	80063	2	1	SMB294206	80063	5	11
SMB294060	80063	13	2	SMB294207	80063	5	10
SMB294061	90063	4	12	SMB294208	80063	5	25
SMB294062	80063	4	11	SMB294215	80063	5	20
SMB294063	80063	4	19	SMB294216	80063	6	1
SMB294067	80063	3	6	SMB294217	80063	6	3
SMB294068	80063	3	5	SMB294221	80063	6	2
SMB294069	80063	3	4	SMB294223	80063	5	18
SMB294071	80063	3	18	SMB294228	80063	5	1
SMB294072	80063	3	1	SMB294247	80063	7	8
SMB294073	80063	3	3	SMB361823-1	80063	8	2
SMB294075	80063	3	15	SMB361825	80063	3	17
SMB294076	80063	3	14	SMB361826	80063	3	3
SMB294077	80063	3	11	SMB361827	80063	3	1
SMB294080	80063	3	9	SMB366829	80063	15	9
SMB294084	80063	13	49	SMB366833	80063	3	10
SMB294088	80063	13	47	SMC191866	80063	11	17
SMB294091	80063	13	46	SMC191867	80063	11	12

SECTION IV. NATIONAL STOCK NUMBER AND PART NUMBER INDEX

PART NUMBER	FSCM	FIG. NO.	ITEM NO.		PART NUMBER	FSCM	FIG. NO.	ITEM NO.
SMC191869	80063	11	24	U-120/U	81349		16	1
SMC294070	80063	3	2	WYBUG	72264		4	18
SMC294116	80063	9	11	XA-1	93929		11	45
SMC294117	80063	9	1	1SM1	91929		8	11
SMC294126	80063	10	2	10-32NFX12	81349		5	17
SMC294131	80063	9	23	1001S-12-8	81349		11	5
SMC294150	80063	11	32	100-7B3-5	81349		14	3
SMC294161	80063	11	42	102-3B-3	81349		14	5
SMC294168	80063	11	24	102-3B12	81349		4	8
SMC2S4182	80063	14	10	104-2B-3R	81349		14	2
SMC294186	80063	11	19	11060	72264		11	8
SMC294187	80063	15	8	113C18	97497		11	25
SMC294195	80063	4	17	117P	14907		7	5
SMC294196	80063	11	6	12-272XP100	95263		9	20
SMC294212	80063	5	2	12-272XP99	95263		9	7
SMC294224	80063	5	19	14000FR	72264		12	3
SMC294225	80063	5	7	18	70495		13	42
SMC294227	80063	5	17	2-140	71785		8	1
SMC294231	80063	5	15	25X	70485		13	42
SMC294238	80063	5	21	31269	81349		13	39
SMC294246	80063	7	5	3522-10-01	78189		9	29
SMC366828	80063	11	24	353-11-07-001	71785		11	40
SMC366830-2	80063	4	4	357002	72915		13	45
SMD191864	80063	1	1	5133-12	81349		7	20
SMD191865	80063	1	3	516946-A	23667		5	18
SMD294052	80063	1	5	516951B	23667		5	11
SMD294053	80063	1	4	516952A	23667		7	16
SMD294054	80063	4	20	516996	23667		5	7
SMD294055	60063	1	1	517052-1-B	23667		5	10
SMD294056	80063	1	2	517053C	23667		13	18
SMD294058	80063	2	4	517065-1-B	23667		9	39
SMD294064	80063	1	6	517512-1-G	23667		1	3
SMD294065	80063	1	6	517530-1-B	23667		11	29
SMD294066	80063	3	7	6-141	71785		13	33
SMD294083	80063	13	1	683-A-0405	92071		5	25
SMD294125	80063	9	39	7502F	00194		8	7
SMD294167	80063	11	25	7663-K4	15605		13	12
SMD294209	80063	5	3	7663-K5	15605		13	12
SMD294226	80063	5	6	82610	04009		13	11
SMD361830	80063	1	5	827-228-F13	27191		5	22
TS102C01	81349	11	46	8516	72264		11	7
TS102P01	81349	11	46	8516	72264		12	1

LATEST NATIONAL STOCK NUMBER ASSIGNMENTS

STOCK NUMBER	FIG. NO.	ITEM NO.	STOCK NUMBER	FIG. NO.	ITEM NO.
5310-00-045-3296	5	13	5305-00-717-6948	2	3
5310-00-045-3296	7	2	5305-00-719-5339	5	12
5310-00-045-3296	8	9	5320-00-721-5211	9	26
5310-00-045-3296	11	3	5310-00-761-6882	4	8
5310-00-045-3296	13	6	5310-00-761-6882	13	16
5305-00-550-0836	4	12	5310-00-934-9747	4	14
5310-00-550-1350	5	23	5310-00-934-9747	5	16
5310-00-550-1350	7	16	5310-00-934-9747	13	31
5305-00-558-3671	8	12	5310-00-934-9757	9	28
6660-00-565-0235	5	19	5310-00-934-9765	7	4
5320-00-619-0498	9	6	5305-00-952-1511	11	5
5930-00-655-1582	7	10	5305-01-045-0080	9	2
6105-00-686-5396	8	21			

LATEST PART NUMBER ASSIGNMENTS

PART NUMBER	FSCM	FIG. NO.	ITEM NO.	PART NUMBER	FSCM	FIG. NO.	ITEM NO.
MS35338-43	96906	5	13	MS35649-262	96906	5	16
MS35338-43	96906	7	2	MS35649-262	96906	13	31
MS35338-43	96906	8	9	MS35649-282	96906	9	3
MS35338-43	96906	11	3	MS51963-11	96906	2	3
MS35338-43	96906	13	6	MS51963-22	96906	5	12

☆ U.S. GOVERNMENT PRINTING OFFICE : 1981--345-264/1714

SECTION IV. NATIONAL STOCK NUMBER AND PART NUMBER INDEX

NOTE: LATEST NATIONAL STOCK NUMBER AND PART NUMBER ASSIGNMENTS ARE INCLUDED AT END OF INDEX.

STOCK NUMBER	FIG. NO.	ITEM NO.	STOCK NUMBER	FIG. NO.	ITEM NO.
			6660-00-475-1925	3	9
			6660-00-475-1929	3	11
			6660-00-475-1930	14	9
			6660-00-475-1936	10	8
5305-00-043-6668	13	40	5990-00-503-0588	11	25
5310-00-045-3299	4	7	5355-00-503-3050	9	16
5310-00-045-3299	9	35	3020-00-517-1188	7	17
5313-00-045-3299	11	37	6660-00-530-2040	3	2
5310-00-045-3299	13	26	5940-00-537-2539	14	10
5310-00-045-4007	4	15	9905-00-543-2036	13	13
5310-00-045-4007	5	5	6660-00-543-3051	9	14
5310-00-045-4007	7	6	5310-00-543-5060	8	13
5310-00-045-4007	8	4	6145-00-548-1258	16	2
5313-00-045-4007	9	3	5930-00-548-4239	8	11
5310-00-045-4007	11	13	5310-00-550-0777	4	8
5310-00-045-4007	12	5			
5310-00-045-4007	13	8	5310-00-551-7770	3	13
5310-00-045-5001	13	3	5310-00-551-7770	4	10
5310-00-045-5207	2	2	5310-00-551-7770	9	21
			5310-00-551-7770	10	6
5310-00-062-0912	9	4	5310-00-551-7770	11	10
5940-00-082-4892	15	7	5310-00-551-7770	13	21
5905-00-101-5740	13	28	5935-00-552-2369	16	4
5320-00-118-1995	10	3	5935-00-560-2247	13	10
6240-00-143-3060	9	8	6660-00-563-5212	1	2
			6660-00-565-0228	9	11
			6660-00-565-0229	1	1
			6660-00-565-0230	9	17
			6660-00-565-0231	5	1
			6660-00-565-0232	13	15
9390-00-176-1326	3	6	6660-00-565-0234	11	29
3020-00-203-1561	7	15	6660-00-565-0236	11	2
3020-00-203-1563	8	19	6660-00-565-0238	4	20
5920-00-221-5673	13	45	6660-00-566-7987	1	6
6625-00-223-7303	4	19	6660-00-566-7988	1	6
5935-00-227-8423	2	6	5945-00-577-1550	11	47
5935-00-239-3758	11	46	5305-00-602-5116	5	18
5305-00-249-0001	2	3	5930-00-642-9253	13	12
			5930-00-642-9253	13	12
5935-00-260-0516	11	46	5930-00-646-4619	8	11
7510-00-269-8135	12	2	5950-00-648-1582	11	34
			5930-00-655-1514	7	10
5365-00-282-1633	7	20	5945-00-660-6197	11	16
5935-00-283-3394	2	5	6660-00-663-4712	5	3
5920-00-284-9220	13	44	6660-00-663-7915	4	18
5340-00-291-3650	13	42	6660-00-663-8082	12	3
5960-00-295-9067	11	45	5360-00-664-2134	13	48
5905-00-299-7976	13	29	5360-00-664-7974	9	32
6105-00-324-9070	8	21	5935-00-688-4026	16	3
3010-00-330-9795	7	5	5305-00-717-6949	7	3
5330-00-396-0068	13	10	5305-00-717-6949	8	20
5999-00-396-3460	14	4	5305-00-719-5329	3	8
6660-00-399-7981	11	29	5930-00-729-7335	13	11
6660-00-399-7984	5	7	6660-00-758-0065	4	11
6660-00-399-7985	6	3	6660-00-758-0065	4	11
6660-00-399-7987	7	13	5310-00-763-8920	13	4
6660-00-399-7988	4	13	5320-00-800-4819	15	10
6660-00-399-7989	9	39	5310-00-809-8544	9	34
6660-00-399-7990	13	47	5310-00-809-8546	11	28
6660-00-399-7993	5	20	5940-00-613-0698	13	39
6660-00-399-7993	6	4	5310-00-823-8804	13	17
6660-00-399-7994	5	10	5935-00-839-2508	13	24
6660-00-399-7995	5	25	5935-00-839-2508	13	24
6660-00-399-7997	1	3	5305-00-840-3956	14	14
6625-00-405-5753	11	7	5935-00-853-3377	13	23
6625-00-405-5753	12	1	5305-00-889-2997	10	5
5305-00-416-6297	8	10	5305-00-889-2997	11	11
5999-00-465-1290	15	4	5305-00-889-2997	13	22
5950-00-472-7277	11	1	5305-00-889-3000	11	39
5950-00-472-7278	11	2	5305-00-889-3000	12	6
3120-00-475-1837	12	8	5305-00-889-3001	4	16
5365-00-475-1843	9	31	5305-00-889-3001	11	14
6660-00-475-1856	13	18	5305-00-889-3001	12	7
6660-00-475-1859	13	2	5305-00-889-3001	13	32
6660-00-475-1891	10	7	5305-00-889-3002	4	6
6660-00-475-1896	5	6	5305-00-889-3002	11	49
6660-00-475-1911	14	1	5305-00-889-3116	3	12
6660-00-475-1912	14	8	5340-00-889-3245	13	42
6660-00-475-1913	5	1	5310-00-933-8118	14	7
6660-00-475-1915	11	19	5310-00-933-8121	4	2

SECTION IV. NATIONAL STOCK NUMBER AND PART NUMBER INDEX

STOCK NUMBER	FIG. NO.	ITEM NO.	STOCK NUMBER	FIG. NO.	ITEM NO.
5310-00-934-9738	8	15	5305-00-964-4989	8	23
5310-00-934-9739	11	48	5305-00-984-4989	13	35
5310-00-934-9748	9	22	5305-00-984-4992	8	5
5310-00-934-9748	13	19	5305-00-984-4992	13	9
5310-00-934-9751	5	14	5305-00-984-6192	11	36
3020-00-936-8473	5	24	5305-00-984-6194	9	37
5310-00-950-1310	9	38	5305-00-984-6194	13	41
5305-00-957-6265	5	8	5305-00-984-6196	13	25
5940-00-983-6043	8	1	5305-00-984-6208	11	4
5940-00-983-6047	11	40	5305-00-984-6210	13	7
5940-00-983-6084	13	33	5305-00-984-6211	11	27
5310-00-983-8483	11	26	5305-00-984-6222	13	38
5310-00-983-8483	12	5	5305-03-984-6223	13	27
5305-00-984-4982	5	4	5305-00-988-1724	4	3
5305-00-984-4982	7	7	5305-00-988-1725	4	1
5305-00-984-4982	8	8	5310-00-989-0908	13	16
5305-00-984-4983	3	16	5305-00-953-0190	4	9
5305-00-984-4983	8	6	5305-00-993-0190	9	15
5305-00-984-4983	9	13	5305-00-993-1848	5	9
5305-00-984-4988	8	16	5935-01-005-3579	16	1

PART NUMBER	FSCM	FIG. NO.	ITEM NO.	PART NUMBER	FSCM	FIG. NO.	ITEM NO.
AN3102A-16S-4P	88044	13	24	MS35225-30	96906	12	6
AN3102A-22-18S	88044	13	23	MS35225-31	96906	4	16
AP-517064	23667	13	10	MS35225-31	96906	11	14
AP-517510	23667	11	34	MS35225-31	96906	12	7
BX-183-J	54294	13	29	MS35225-31	96906	13	32
C0-02MGF2/180300	81349	16	2	MS35225-32	96906	8	5
F02B250V1A	81349	13	44	MS35225-32	96906	13	9
F02G1R00B	81349	13	44	MS35225-33	96906	13	40
KA11A	77342	11	16	MS35225-35	96906	12	36
KYAB5929-3	05624	8	21	MS35225-36	96906	13	27
MS05649-42	96906	13	19	MS35225-42	96906	4	6
MS15567-1	96906	9	8	MS35225-42	96906	11	49
MS15795-908	96906	2	2	MS35225-43	96906	13	25
MS16633-1018	96906	7	20	MS35225-44	96906	11	36
MS17122-18	96906	15	7	MS35225-46	96906	9	37
MS20426A4-4	96906	9	6	MS35225-46	96906	13	41
MS2045006B10	96906	15	10	MS35225-61	96906	11	4
MS2045006B12	96906	15	5	MS35225-63	96906	13	7
MS20470A4-6	96906	9	26	MS35225-64	96906	11	27
MS20470B4-6	96906	10	3	MS35225-7	9690b	8	12
MS25036-1	96906	13	39	MS35225-80	90906	4	3
MS25085-1	96906	8	11	MS35225-81	96906	4	1
MS25281-5P	96906	4	5	MS35226-60	96906	11	43
MS27183-4	96906	9	38	MS35226-64	96906	8	10
MS27183-5	96906	11	26	MS35226-65	96906	5	9
MS27183-5	96906	12	5	MS35241-33	96906	5	8
MS27183-7	96906	9	34	MS35337-39	96906	8	13
MS27183-8	96906	11	28	MS35337-40	96906	3	13
MS27183-9	96906	13	17	MS35337-40	96906	4	10
MS3057-12	96906	2	5	MS35337-40	96906	9	21
MS3057-8A	96906	16	3	MS35337-40	96906	10	6
MS3102R-16S-4P	96906	13	24	MS35337-40	96906	11	10
MS3102R-22-18S	96906	13	23	MS35337-40	96906	13	21
MS3106A-16S-4S	96906	16	4	MS35337-41	96906	4	15
MS3106A-22-18P	96906	2	6	MS35337-41	96906	5	5
MS32058-1	96906	13	11	MS35337-41	96906	7	6
MS35058-22	96906	7	10	MS35337-41	96906	8	4
MS35059-23	96906	7	10	MS35337-41	96906	9	3
MS35214-7	96906	14	14	MS35337-41	96906	11	13
MS35225-13	96906	3	12	MS35337-41	96906	12	5
MS35225-14	96906	4	9	MS35337-41	96906	13	8
MS35225-14	96906	9	15				
MS35225-15	96906	10	5				
MS35225-15	96906	11	11				
MS35225-15	96906	13	22				
MS35225-25	96906	5	4				
MS35225-25	96906	7	7	MS35338-42	96906	4	7
MS35225-25	96906	8	8	MS35338-42	96900	9	35
MS35225-26	96906	3	16	MS35338-42	96906	11	37
MS35225-26	96906	8	6	MS35338-42	96906	13	26
MS35225-26	96906	9	13	MS35338-78	96906	14	7
MS35225-28	96906	8	16	MS35338-82	96906	4	2
MS35225-29	96906	8	23	MS35339-31	96906	13	3
MS35225-29	96906	13	35	MS35639-42	96906	9	36
MS35225-30	96906	11	39	MS35649-22	96906	8	15

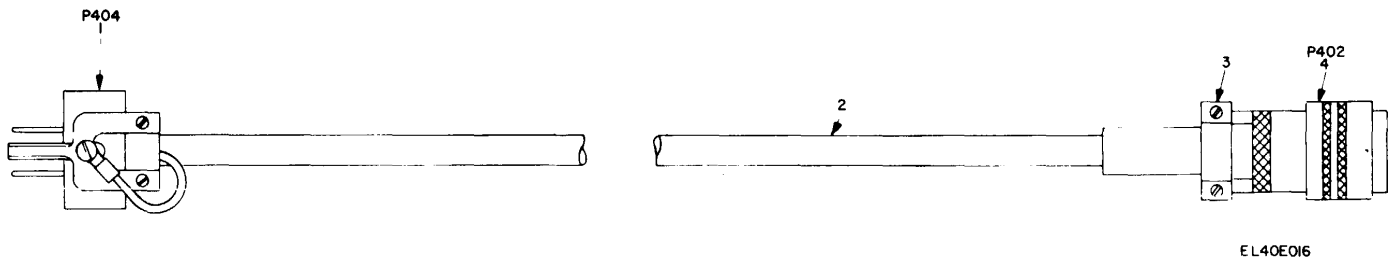


Figure 16. Cable Assembly, Power Electrical (W401).

SECTION II

TM11-6660-231-24P

(1) ILLUSTRATION		(2)	(3)	(4)	(5)	(6) DESCRIPTION	(7)	(8)
(a) FIG NO.	(b) ITEM NO.	SMR CODE	NATIONAL STOCK NUMBER	PART NUMBER	FSCM	USABLE ON CODE	U/M	QTY INC IN UNIT
						GROUP 01 CABLE ASSEMBLY, POWER ELECTRICAL (W401)		
16	1	PAOZZ	5935-00-005-3579	U-120/U	81349	CONNECTOR, PLUG, ELEC	EA	1
16	2	PAOZZ	6145-00-548-1258	C0-02MGF2/180300	81349	CABLE, POWER, ELEC	FT	8
16	3	PAOZZ	5935-00-688-4026	MS3057-8A	96906	CLAMP, CA, ELEC, CONN	EA	1
16	4	PAOZZ	5935-00-552-2369	MS3106A-16S-4S	96906	CONNECTOR, PLUG, ELEC	EA	1
					41			

By Order of the Secretary of the Army:

BERNARD W. ROGERS
General, United States Army
Chief of Staff

Official:

J.C. PENNINGTON
Brigadier General, United States Army
The Adjutant General

Distribution:

Active Army:

HISA (Ft Monmouth) (26)
USAINSCOM (2)
COE (1)
TSG (1)
USAARENBD (1)
DARCOM (1)
TRADOC (2)
OS Maj Comd (4)
TECOM (2)
USACC (4)
MDW (1)
Armies (2)
Corps (2)
Edgewood Arsenal (2)
Svc Colleges (1)
USASIGS (5)
USAADS (2)
USAFAS (2)
USAARMS (2)
USAIS (2)
USAES (2)
USAICS (3)
MAAG (1)
USARMIS (1)
USAERDAA (1)
USAERDAW (1)

USACRREL (2)
USAFABD (1)
Fort Gordon (10)
Fort Huachuca (10)
Fort Carson (5)
Fort Gillem (5)
Ft Richardson (CERCOM Ofc) (2)
Army Dep (1) except
 LBAD (14)
 SAAD (30)
 TOAD (14)
 SHAD (3)
USA Dep (1)
Sig Sec USA Dep (1)
Units org under fol TOE:
 (2 cys each unit)
 29-207
 29-610
Units org under fol TOE:
 (1 cy each unit)
 11-96
 11-117
 11-127
 11-500 (AA-AC)
 29-134
 29-136

NG: State AG (1); Units- To the following state AG: AZ, AR, CT, IN, IA, MS, MO, NY, NC, OH, OR, PA, TX, VA, WV, PR.

USAR: None

For explanation of abbreviations used, see AR 310-50.

RECOMMENDED CHANGES TO EQUIPMENT TECHNICAL PUBLICATIONS



THEN... JOT DOWN THE DOPE ABOUT IT ON THIS FORM, CAREFULLY TEAR IT OUT, FOLD IT AND DROP IT IN THE MAIL!

SOMETHING WRONG WITH THIS PUBLICATION?

FROM: (PRINT YOUR UNIT'S COMPLETE ADDRESS)

DATE SENT

PUBLICATION NUMBER

TM 11-5825-270-10

PUBLICATION DATE

23 Jul 81

PUBLICATION TITLE

Radio Frequency R-2176/FRN

BE EXACT... PIN-POINT WHERE IT IS

PAGE NO.

PARA-GRAPH

FIGURE NO.

TABLE NO.

IN THIS SPACE TELL WHAT IS WRONG AND WHAT SHOULD BE DONE ABOUT IT:

TEAR ALONG PERFORATED LINE

PRINTED NAME, GRADE OR TITLE, AND TELEPHONE NUMBER

SIGN HERE:

DA FORM 2028-2 JUL 79

PREVIOUS EDITIONS ARE OBSOLETE.

P.S.—IF YOUR OUTFIT WANTS TO KNOW ABOUT YOUR RECOMMENDATION MAKE A CARBON COPY OF THIS AND GIVE IT TO YOUR HEADQUARTERS.

THE METRIC SYSTEM AND EQUIVALENTS

WEIGHT MEASURE

1 Centimeter = 10 Millimeters = 0.01 Meters = 0.3937 Inches
 1 Meter = 100 Centimeters = 1000 Millimeters = 39.37 Inches
 1 Kilometer = 1000 Meters = 0.621 Miles

WEIGHTS

1 Gram = 0.001 Kilograms = 1000 Milligrams = 0.035 Ounces
 1 Kilogram = 1000 Grams = 2.2 lb.
 1 Metric Ton = 1000 Kilograms = 1 Megagram = 1.1 Short Tons

LIQUID MEASURE

1 Milliliter = 0.001 Liters = 0.0338 Fluid Ounces
 1 Liter = 1000 Milliliters = 33.82 Fluid Ounces

SQUARE MEASURE

1 Sq. Centimeter = 100 Sq. Millimeters = 0.155 Sq. Inches
 1 Sq. Meter = 10,000 Sq. Centimeters = 10.76 Sq. Feet
 1 Sq. Kilometer = 1,000,000 Sq. Meters = 0.386 Sq. Miles

CUBIC MEASURE

1 Cu. Centimeter = 1000 Cu. Millimeters = 0.06 Cu. Inches
 1 Cu. Meter = 1,000,000 Cu. Centimeters = 35.31 Cu. Feet

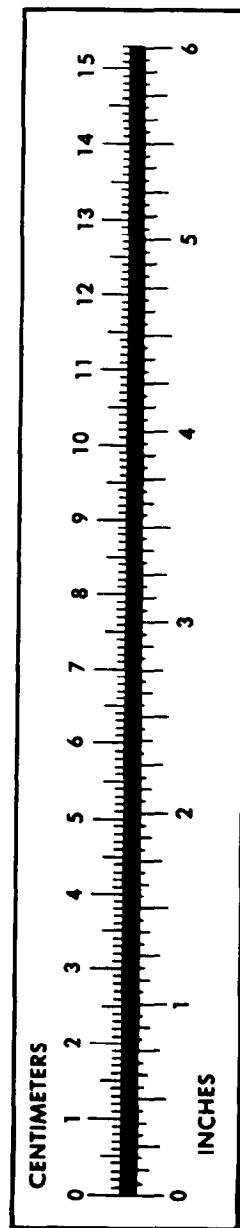
TEMPERATURE

$5/9(^{\circ}\text{F} - 32) = ^{\circ}\text{C}$
 212° Fahrenheit is equivalent to 100° Celsius
 90° Fahrenheit is equivalent to 32.2° Celsius
 32° Fahrenheit is equivalent to 0° Celsius
 $9/5^{\circ}\text{C} + 32 = ^{\circ}\text{F}$

APPROXIMATE CONVERSION FACTORS

TO CHANGE	TO	MULTIPLY BY
Inches	Centimeters	2.540
Feet	Meters	0.305
Yards	Meters	0.914
Miles	Kilometers	1.609
Square Inches	Square Centimeters	6.451
Square Feet	Square Meters	0.093
Square Yards	Square Meters	0.836
Square Miles	Square Kilometers	2.590
Acres	Square Hectometers	0.405
Cubic Feet	Cubic Meters	0.028
Cubic Yards	Cubic Meters	0.765
Fluid Ounces	Milliliters	29.573
its	Liters	0.473
arts	Liters	0.946
allons	Liters	3.785
Ounces	Grams	28.349
Pounds	Kilograms	0.454
Short Tons	Metric Tons	0.907
Pound-Feet	Newton-Meters	1.356
Pounds per Square Inch	Kilopascals	6.895
Miles per Gallon	Kilometers per Liter	0.425
Miles per Hour	Kilometers per Hour	1.609

TO CHANGE	TO	MULTIPLY BY
Centimeters	Inches	0.394
Meters	Feet	3.280
Meters	Yards	1.094
Kilometers	Miles	0.621
Square Centimeters	Square Inches	0.155
Square Meters	Square Feet	10.764
Square Meters	Square Yards	1.196
Square Kilometers	Square Miles	0.386
Square Hectometers	Acres	2.471
Cubic Meters	Cubic Feet	35.315
Cubic Meters	Cubic Yards	1.308
Milliliters	Fluid Ounces	0.034
Liters	Pints	2.113
Liters	Quarts	1.057
ers	Gallons	0.264
ms	Ounces	0.035
ograms	Pounds	2.205
Metric Tons	Short Tons	1.102
Newton-Meters	Pounds-Feet	0.738
Kilopascals	Pounds per Square Inch	0.145
meters per Liter	Miles per Gallon	2.354
meters per Hour	Miles per Hour	0.621



PIN: 019477-000